

Residences

RIVAGE

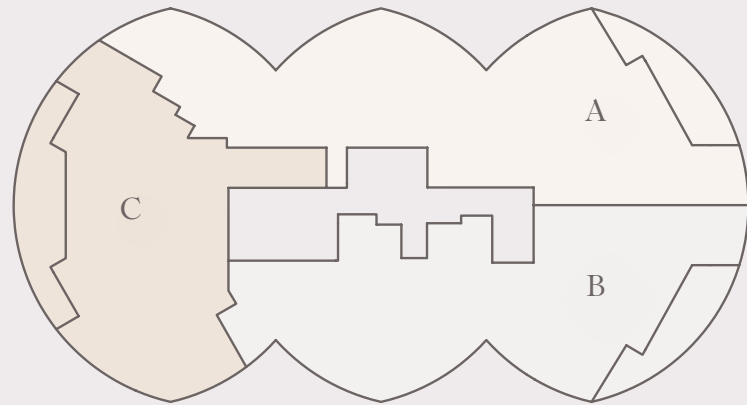
BAL HARBOUR

A modern balcony with a lounge chair and side tables overlooking the ocean at sunset. The balcony features a light-colored tiled floor, a wooden lounge chair with a white cushion, and two dark cylindrical side tables. One side table holds a bottle and a glass, while the other holds a book. The ocean is visible in the background, with the sun setting on the horizon, creating a warm, golden glow. The sky transitions from a pale blue to a soft orange near the horizon. The balcony is enclosed by a glass railing, and a potted plant is visible on the left side.

A Sublime Vision

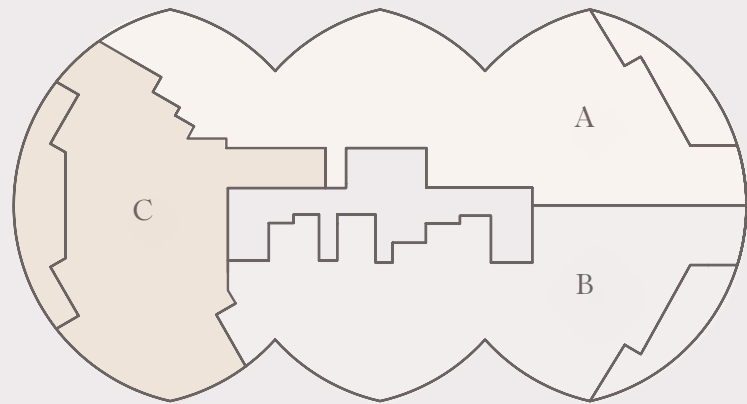
Rivage Bal Harbour takes a rare and unique opportunity—the last three acres of pristine oceanfront in Bal Harbour—and does it full justice. The dazzling glass tower by SOM is a beacon of modern living that houses lavish, refined interiors by Rottet Studio. All of this is immersed in the lush, tropical grounds sculpted by internationally acclaimed Enea Garden Design.

N



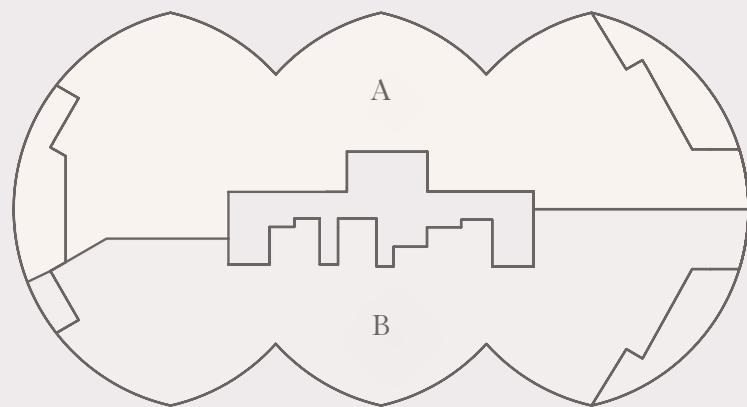
RESIDENCES A, B, C; FLOOR 2

INTRACOASTAL
WATERS



RESIDENCES A, B, C; FLOORS 3-17

ATLANTIC OCEAN



RESIDENCES A, B; FLOORS 18-21

Residences Overview

Direct private-elevator entry to each residence

10-foot ceilings and floor-to-ceiling windows

Terraces up to 12 feet deep offer direct views of the Atlantic Ocean and Biscayne Bay

Spacious living, dining and entertaining area

Custom kitchens with Sub-Zero and Wolf appliance suite (including gas cooktop and full-height wine cellar),

Dornbracht fixtures, wood and marble finishes

Custom bathroom and closet suites

designed by Rottet Studio feature marble,

white oak and Dornbracht fixtures

Primary bathroom with travertine flooring and walls, marble slab countertop, lacquered vanity,

stone-clad bathtub, custom mirrors

and light fixtures

Fully finished wardrobe in every bedroom, with oak millwork and leather-lined drawers

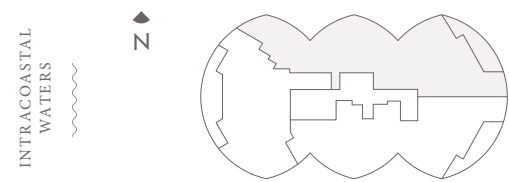
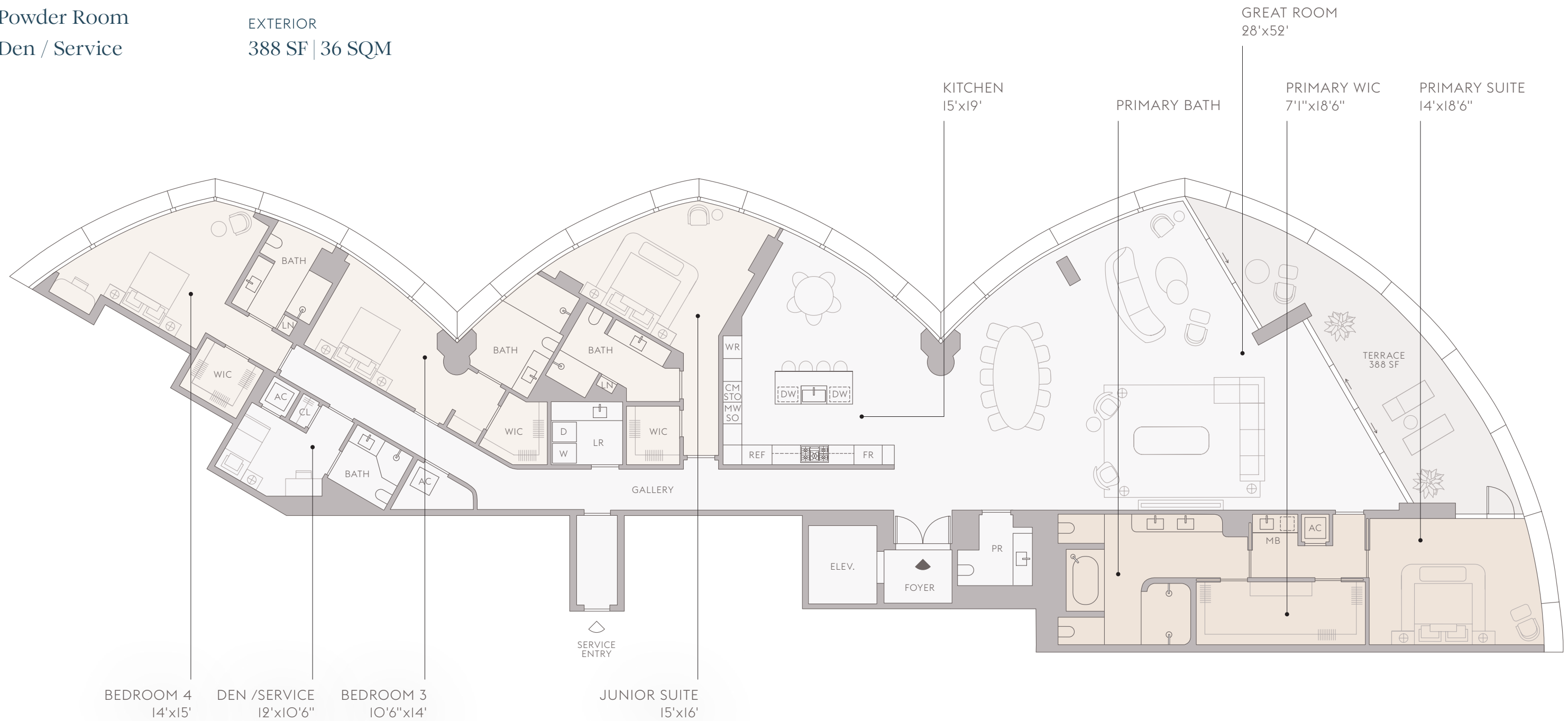


Residence A, Floor 2

4 Bedrooms
 5 Bathrooms
 Powder Room
 Den / Service

INTERIOR
 4,784 SF | 444 SQM
 EXTERIOR
 388 SF | 36 SQM

TOTAL
 5,172 SF | 480 SQM

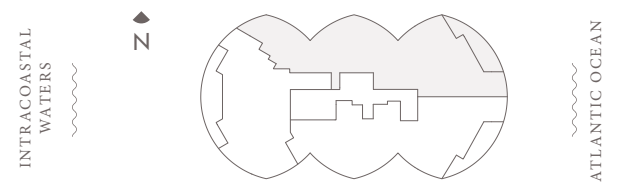
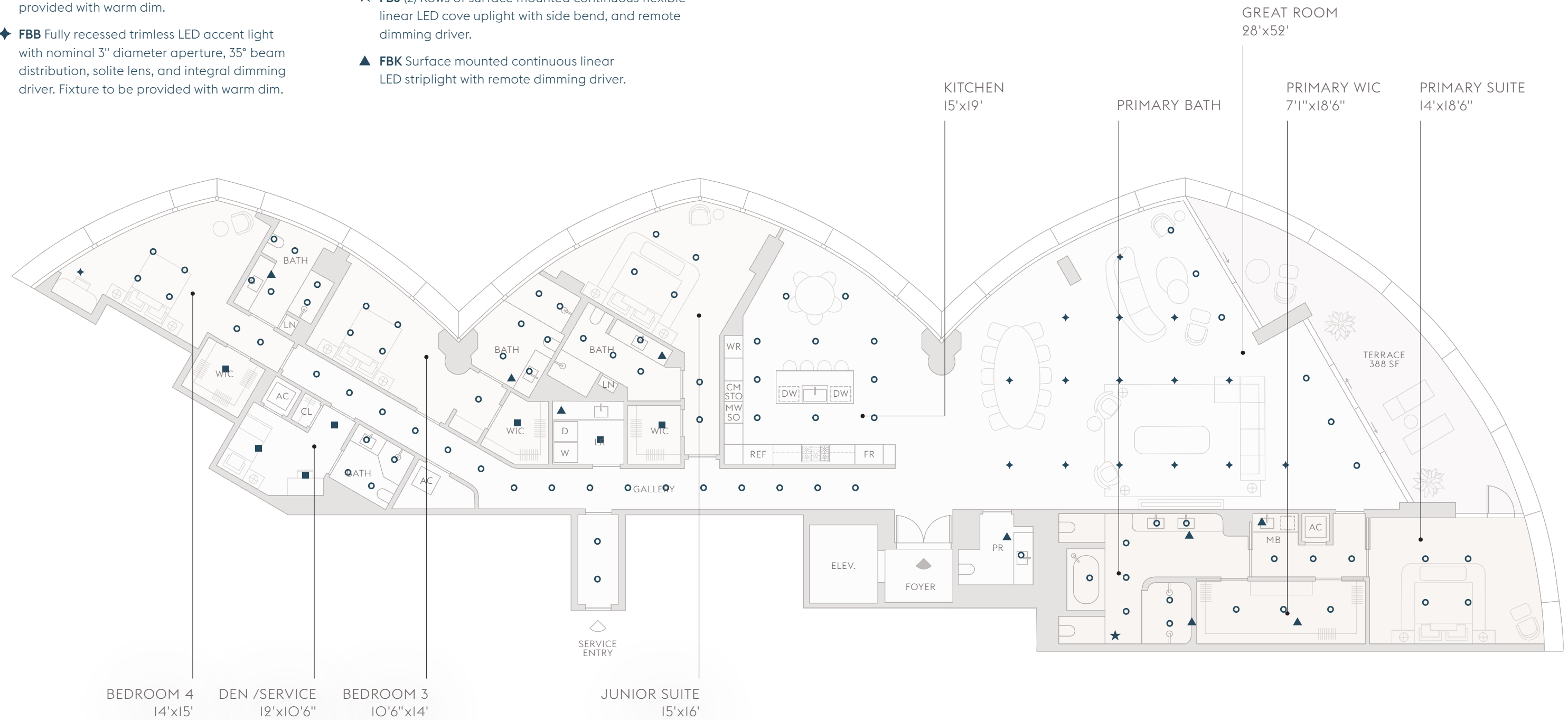


The dimensions stated for this Unit floor plan are approximate because there are various recognized methods for calculating the square footage of a Unit. The square footage stated herein is calculated from the exterior boundaries of the exterior walls to the centerline of interior demising walls without deductions for cutouts, curves, or architectural features. This method typically results in quoted dimensions greater than the dimensions that would be determined by using other accepted methods. The definition of "Unit" and the calculation method to be relied upon is the method of calculation set forth by the Developer in the Developer's Prospectus, which method may result in a square footage calculation that is less than the method used herein. Dimensions and Unit configurations are not guaranteed and may change during construction. Depictions of furnishings, fixtures, and other items of personal property are not included with purchase. Uses of space depicted are not guaranteed. Consult the Developer's Prospectus to learn Unit dimensions, what is offered with the Unit, and all terms and conditions. 2023 © Carlton Terrace Owner LLC, with all rights reserved.

Residence A, Floor 2 Ceiling Plan

- **FBA** Fully recessed trimless LED downlight with nominal 3" diameter aperture, 55° beam distribution, solite lens, and integral driver. Fixture to be provided with warm dim.
- ◆ **FBB** Fully recessed trimless LED accent light with nominal 3" diameter aperture, 35° beam distribution, solite lens, and integral dimming driver. Fixture to be provided with warm dim.

- **FBW** Surface mounted LED downlight with nominal 8" diameter housing.
- ★ **FBJ (2)** Rows of surface mounted continuous flexible linear LED cove uplight with side bend, and remote dimming driver.
- ▲ **FBK** Surface mounted continuous linear LED striplight with remote dimming driver.



The dimensions stated for this Unit floor plan are approximate because there are various recognized methods for calculating the square footage of a Unit. The square footage stated herein is calculated from the exterior boundaries of the exterior walls to the centerline of interior demising walls without deductions for cutouts, curves, or architectural features. This method typically results in quoted dimensions greater than the dimensions that would be determined by using other accepted methods. The definition of "Unit" and the calculation method to be relied upon is the method of calculation set forth by the Developer in the Developer's Prospectus, which method may result in a square footage calculation that is less than the method used herein. Dimensions and Unit configurations are not guaranteed and may change during construction. Depictions of furnishings, fixtures, and other items of personal property are not included with purchase. Uses of space depicted are not guaranteed. Consult the Developer's Prospectus to learn Unit dimensions, what is offered with the Unit, and all terms and conditions. 2023 © Carlton Terrace Owner LLC, with all rights reserved.

Residence A, Floors 3-17

4 Bedrooms

5 Bathrooms

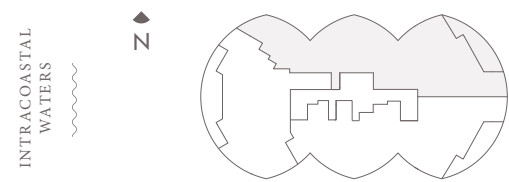
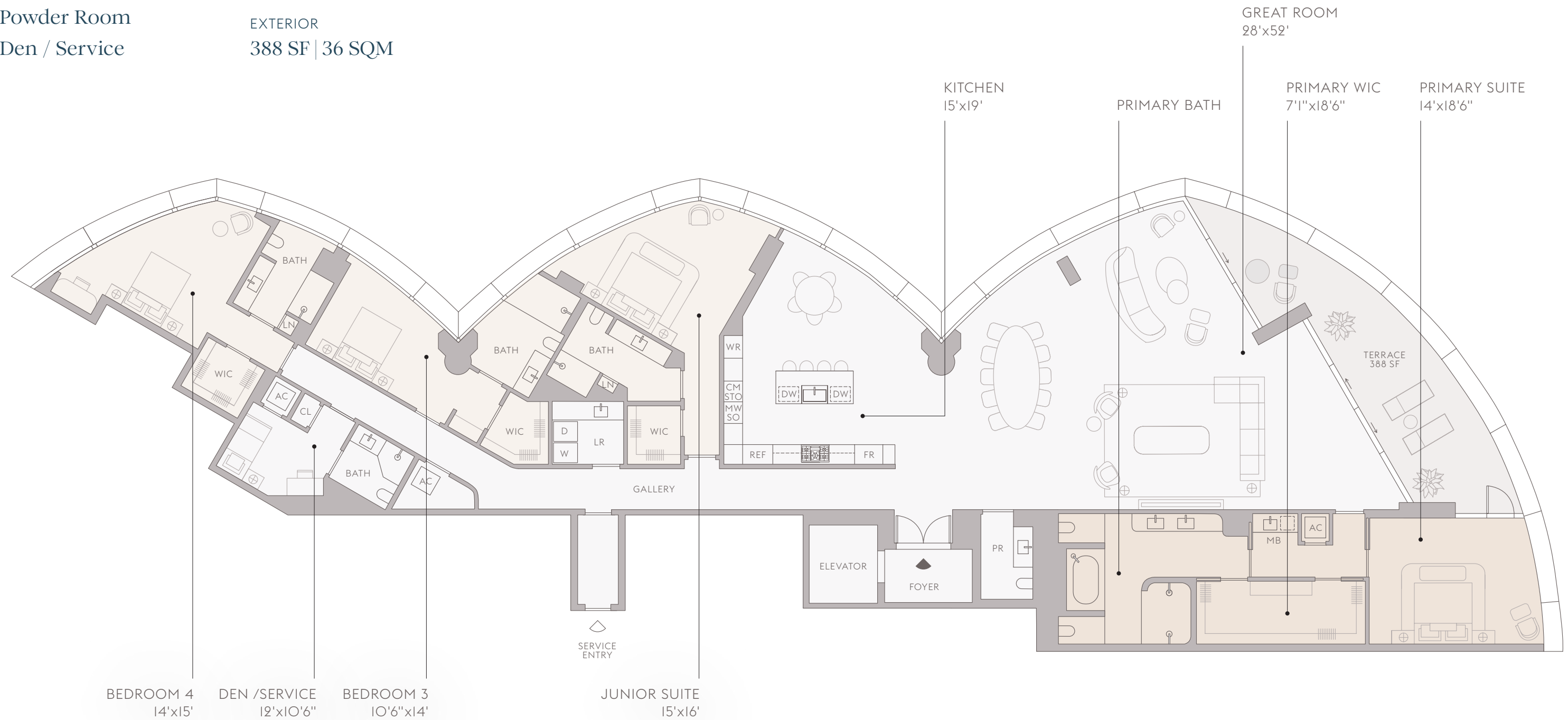
Powder Room

Den / Service

INTERIOR
4,810 SF | 447 SQM

EXTERIOR
388 SF | 36 SQM

TOTAL
5,198 SF | 483 SQM



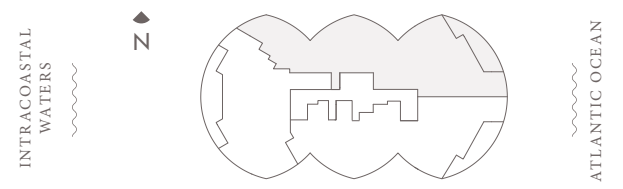
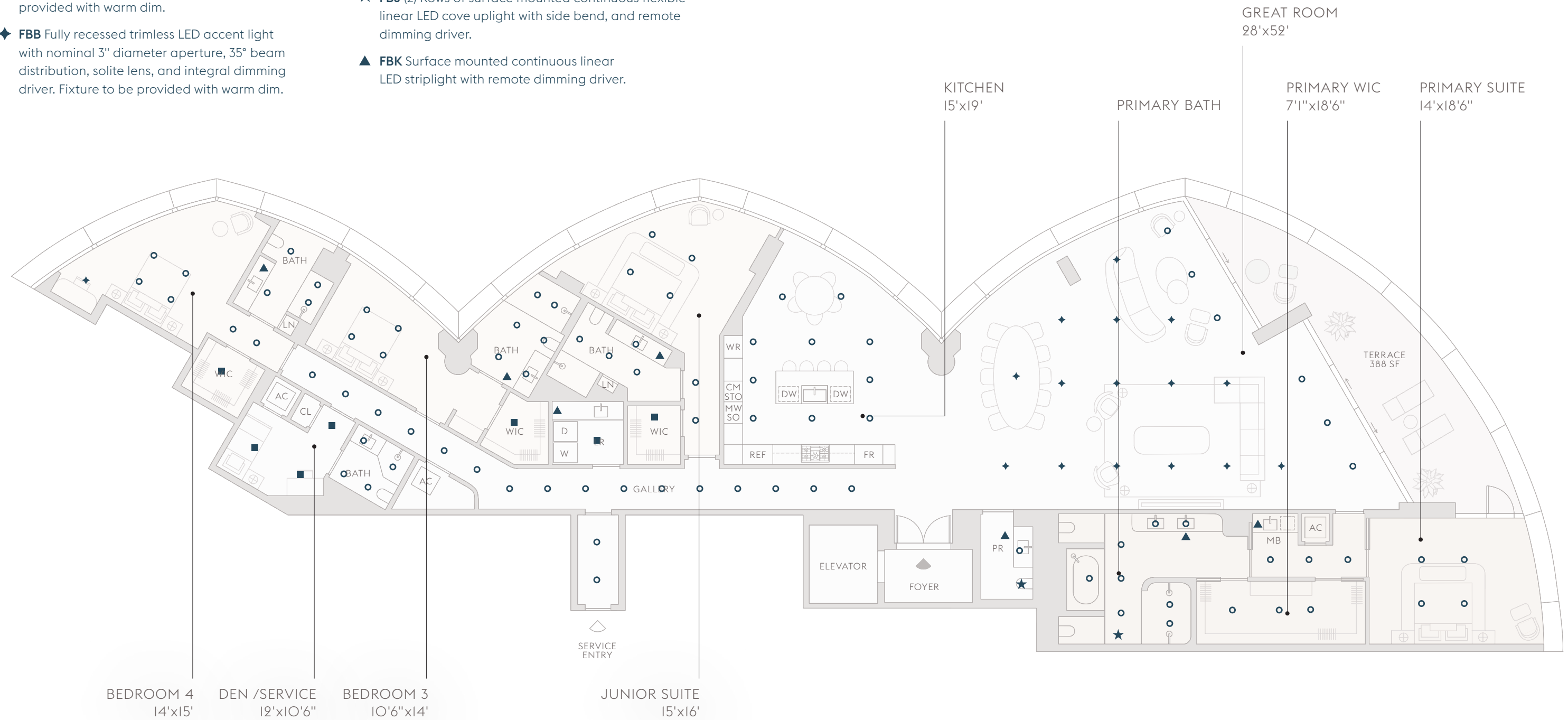
The dimensions stated for this Unit floor plan are approximate because there are various recognized methods for calculating the square footage of a Unit. The square footage stated herein is calculated from the exterior boundaries of the exterior walls to the centerline of interior demising walls without deductions for cutouts, curves, or architectural features. This method typically results in quoted dimensions greater than the dimensions that would be determined by using other accepted methods. The definition of "Unit" and the calculation method to be relied upon is the method of calculation set forth by the Developer in the Developer's Prospectus, which method may result in a square footage calculation that is less than the method used herein. Dimensions and Unit configurations are not guaranteed and may change during construction. Depictions of furnishings, fixtures, and other items of personal property are not included with purchase. Uses of space depicted are not guaranteed. Consult the Developer's Prospectus to learn Unit dimensions, what is offered with the Unit, and all terms and conditions. 2023 © Carlton Terrace Owner LLC, with all rights reserved.

Residence A, Floors 3-17

Ceiling Plan

- **FBA** Fully recessed trimless LED downlight with nominal 3" diameter aperture, 55° beam distribution, solite lens, and integral driver. Fixture to be provided with warm dim.
- ◆ **FBB** Fully recessed trimless LED accent light with nominal 3" diameter aperture, 35° beam distribution, solite lens, and integral dimming driver. Fixture to be provided with warm dim.

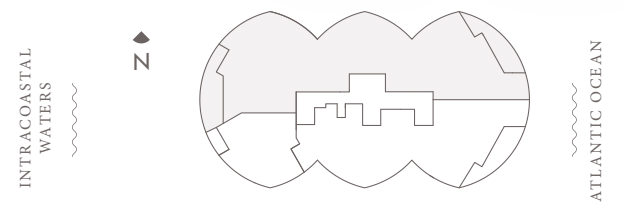
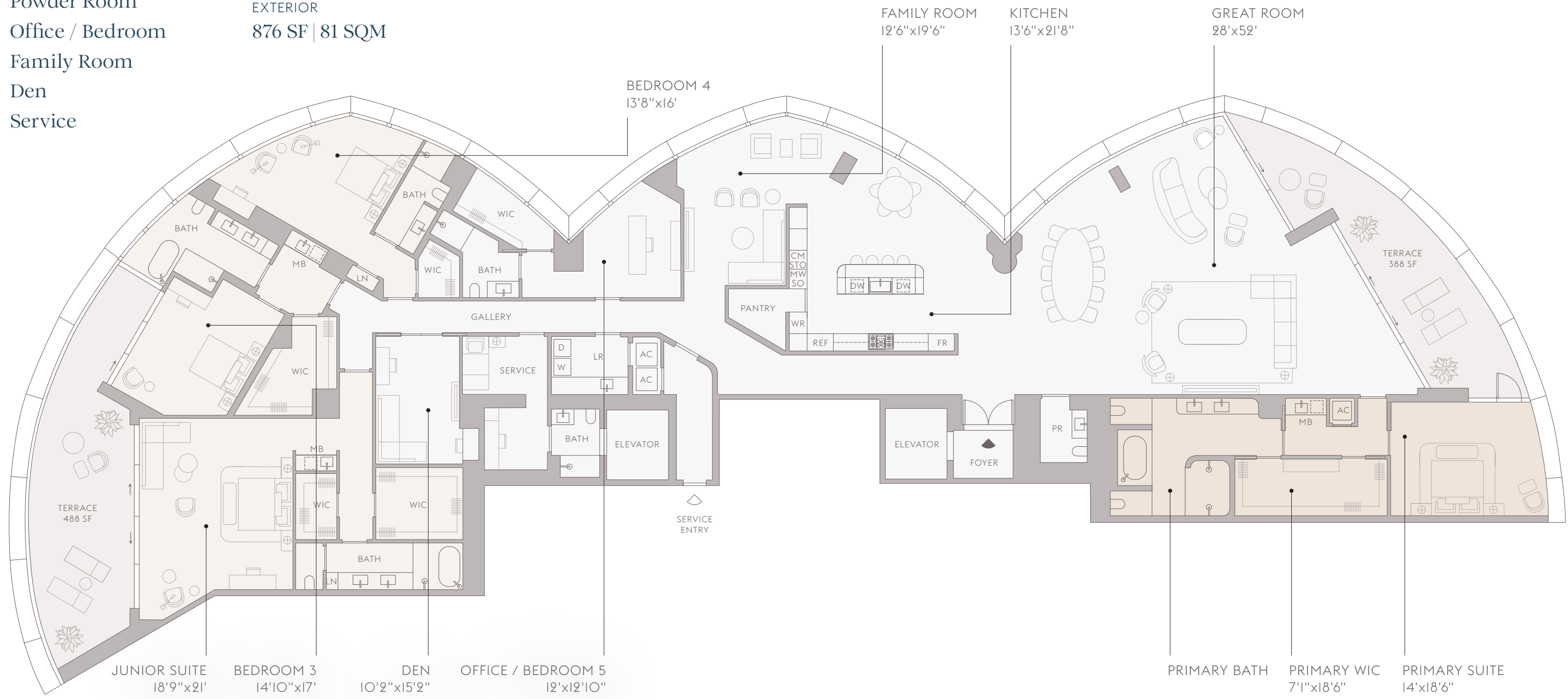
- **FBW** Surface mounted LED downlight with nominal 8" diameter housing.
- ★ **FBJ (2)** Rows of surface mounted continuous flexible linear LED cove uplight with side bend, and remote dimming driver.
- ▲ **FBK** Surface mounted continuous linear LED striplight with remote dimming driver.



The dimensions stated for this Unit floor plan are approximate because there are various recognized methods for calculating the square footage of a Unit. The square footage stated herein is calculated from the exterior boundaries of the exterior walls to the centerline of interior demising walls without deductions for cutouts, curves, or architectural features. This method typically results in quoted dimensions greater than the dimensions that would be determined by using other accepted methods. The definition of "Unit" and the calculation method to be relied upon is the method of calculation set forth by the Developer in the Developer's Prospectus, which method may result in a square footage calculation that is less than the method used herein. Dimensions and Unit configurations are not guaranteed and may change during construction. Depictions of furnishings, fixtures, and other items of personal property are not included with purchase. Uses of space depicted are not guaranteed. Consult the Developer's Prospectus to learn Unit dimensions, what is offered with the Unit, and all terms and conditions. 2023 © Carlton Terrace Owner LLC, with all rights reserved.

Residence A, Floors 18-21

| | | |
|------------------|--------------------|--------------------|
| 4 Bedrooms | INTERIOR | TOTAL |
| 5 Bathrooms | 6,655 SF 618 SQM | 7,531 SF 700 SQM |
| Powder Room | EXTERIOR | |
| Office / Bedroom | 876 SF 81 SQM | |
| Family Room | | |
| Den | | |
| Service | | |



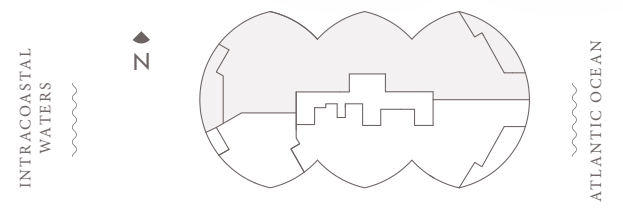
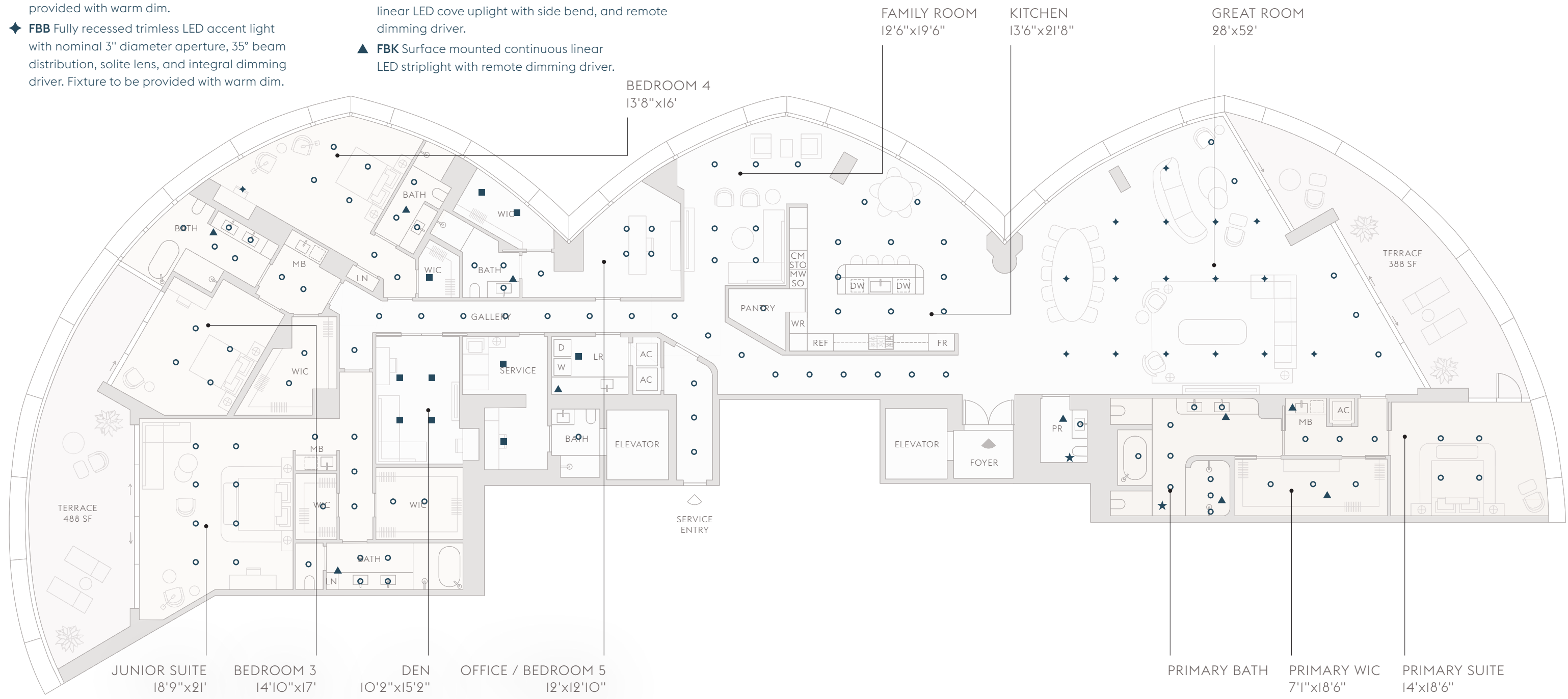
The dimensions stated for this Unit floor plan are approximate because there are various recognized methods for calculating the square footage of a Unit. The square footage stated herein is calculated from the exterior boundaries of the exterior walls to the centerline of interior demising walls without deductions for cutouts, curves, or architectural features. This method typically results in quoted dimensions greater than the dimensions that would be determined by using other accepted methods. The definition of "Unit" and the calculation method to be relied upon is the method of calculation set forth by the Developer in the Developer's Prospectus, which method may result in a square footage calculation that is less than the method used herein. Dimensions and Unit configurations are not guaranteed and may change during construction. Depictions of furnishings, fixtures, and other items of personal property are not included with purchase. Uses of space depicted are not guaranteed. Consult the Developer's Prospectus to learn Unit dimensions, what is offered with the Unit, and all terms and conditions. 2023 © Carlton Terrace Owner LLC, with all rights reserved.

Residence A, Floors 18-21

Ceiling Plan

- **FBA** Fully recessed trimless LED downlight with nominal 3" diameter aperture, 55° beam distribution, solite lens, and integral driver. Fixture to be provided with warm dim.
- ◆ **FBB** Fully recessed trimless LED accent light with nominal 3" diameter aperture, 35° beam distribution, solite lens, and integral dimming driver. Fixture to be provided with warm dim.

- **FBW** Surface mounted LED downlight with nominal 8" diameter housing.
- ★ **FBJ** (2) Rows of surface mounted continuous flexible linear LED cove uplight with side bend, and remote dimming driver.
- ▲ **FBK** Surface mounted continuous linear LED striplight with remote dimming driver.



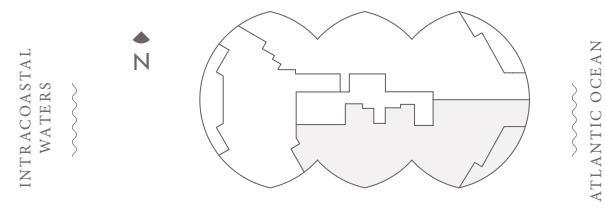
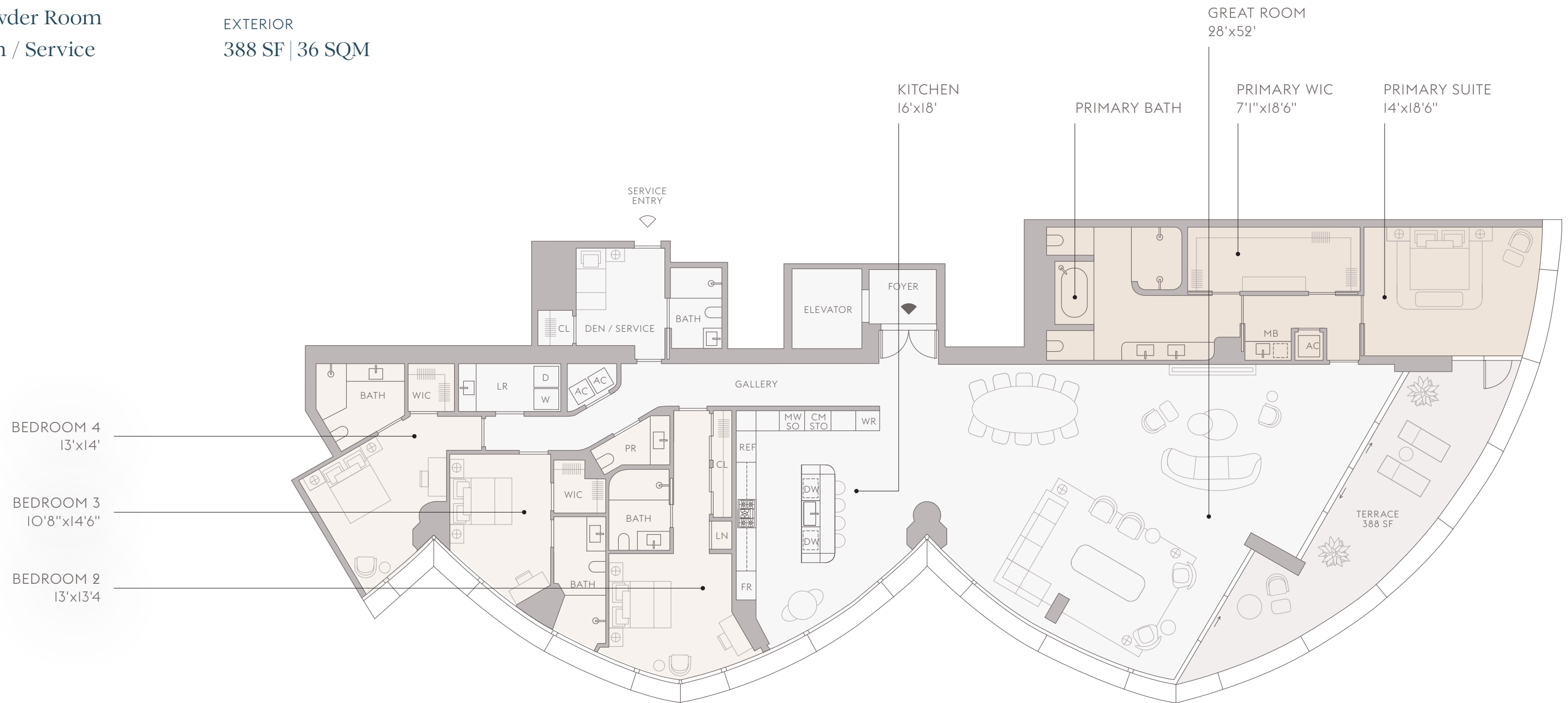
The dimensions stated for this Unit floor plan are approximate because there are various recognized methods for calculating the square footage of a Unit. The square footage stated herein is calculated from the exterior boundaries of the exterior walls to the centerline of interior demising walls without deductions for cutouts, curves, or architectural features. This method typically results in quoted dimensions greater than the dimensions that would be determined by using other accepted methods. The definition of "Unit" and the calculation method to be relied upon is the method of calculation set forth by the Developer in the Developer's Prospectus, which method may result in a square footage calculation that is less than the method used herein. Dimensions and Unit configurations are not guaranteed and may change during construction. Depictions of furnishings, fixtures, and other items of personal property are not included with purchase. Uses of space depicted are not guaranteed. Consult the Developer's Prospectus to learn Unit dimensions, what is offered with the Unit, and all terms and conditions. 2023 © Carlton Terrace Owner LLC, with all rights reserved.

Residence B, Floor 2

4 Bedrooms
 5 Bathrooms
 Powder Room
 Den / Service

INTERIOR
 4,215 SF | 392 SQM
 EXTERIOR
 388 SF | 36 SQM

TOTAL
 4,603 SF | 428 SQM

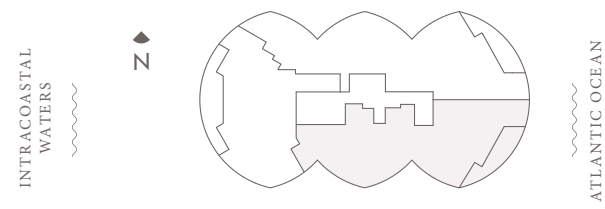
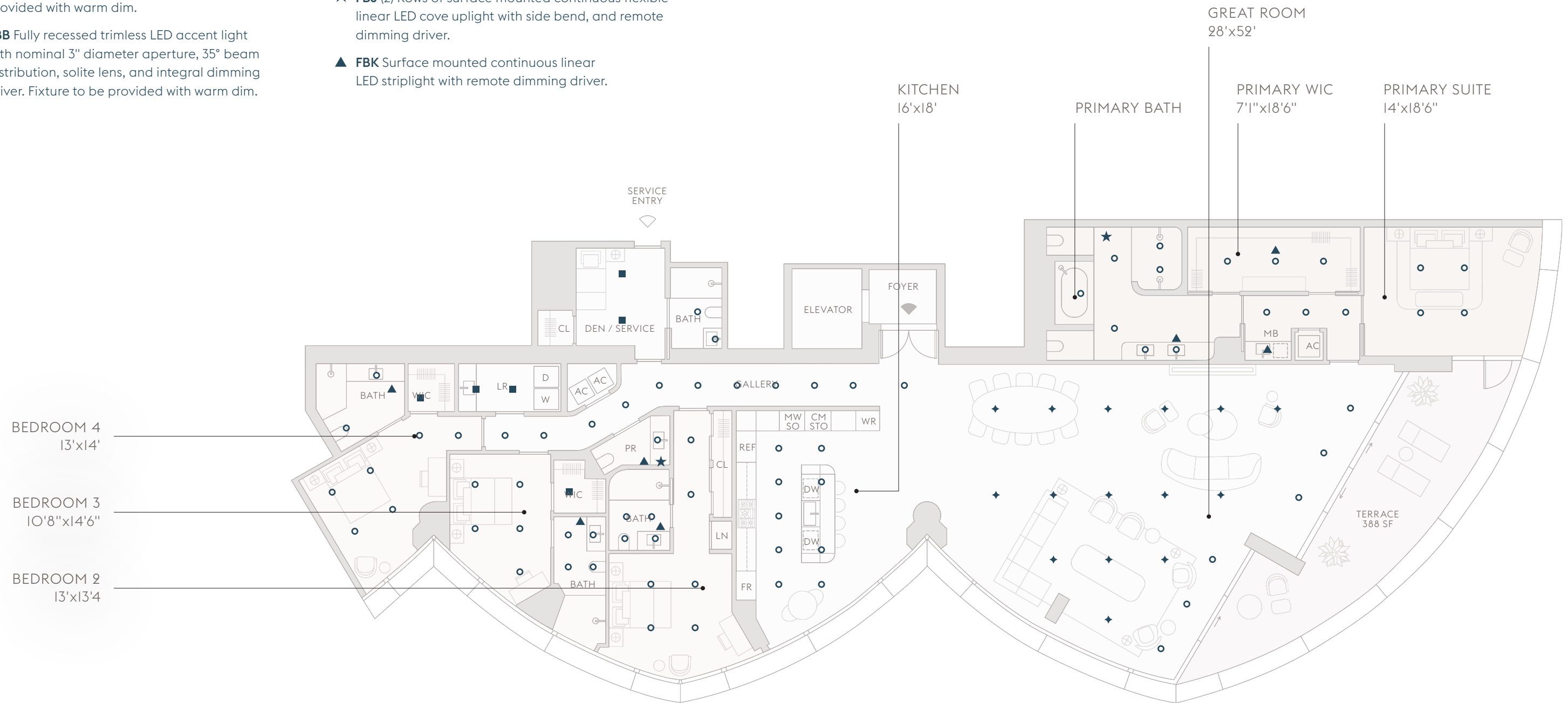


The dimensions stated for this Unit floor plan are approximate because there are various recognized methods for calculating the square footage of a Unit. The square footage stated herein is calculated from the exterior boundaries of the exterior walls to the centerline of interior demising walls without deductions for cutouts, curves, or architectural features. This method typically results in quoted dimensions greater than the dimensions that would be determined by using other accepted methods. The definition of "Unit" and the calculation method to be relied upon is the method of calculation set forth by the Developer in the Developer's Prospectus, which method may result in a square footage calculation that is less than the method used herein. Dimensions and Unit configurations are not guaranteed and may change during construction. Depictions of furnishings, fixtures, and other items of personal property are not included with purchase. Uses of space depicted are not guaranteed. Consult the Developer's Prospectus to learn Unit dimensions, what is offered with the Unit, and all terms and conditions. 2023 © Carlton Terrace Owner LLC, with all rights reserved.

Residence B, Floor 2 Ceiling Plan

- **FBA** Fully recessed trimless LED downlight with nominal 3" diameter aperture, 55° beam distribution, solite lens, and integral driver. Fixture to be provided with warm dim.
- ◆ **FBB** Fully recessed trimless LED accent light with nominal 3" diameter aperture, 35° beam distribution, solite lens, and integral dimming driver. Fixture to be provided with warm dim.

- **FBW** Surface mounted LED downlight with nominal 8" diameter housing.
- ★ **FBJ (2)** Rows of surface mounted continuous flexible linear LED cove uplight with side bend, and remote dimming driver.
- ▲ **FBK** Surface mounted continuous linear LED striplight with remote dimming driver.



The dimensions stated for this Unit floor plan are approximate because there are various recognized methods for calculating the square footage of a Unit. The square footage stated herein is calculated from the exterior boundaries of the exterior walls to the centerline of interior demising walls without deductions for cutouts, curves, or architectural features. This method typically results in quoted dimensions greater than the dimensions that would be determined by using other accepted methods. The definition of "Unit" and the calculation method to be relied upon is the method of calculation set forth by the Developer in the Developer's Prospectus, which method may result in a square footage calculation that is less than the method used herein. Dimensions and Unit configurations are not guaranteed and may change during construction. Depictions of furnishings, fixtures, and other items of personal property are not included with purchase. Uses of space depicted are not guaranteed. Consult the Developer's Prospectus to learn Unit dimensions, what is offered with the Unit, and all terms and conditions. 2023 © Carlton Terrace Owner LLC, with all rights reserved.

Residence B, Floors 3-17

4 Bedrooms

5 Bathrooms

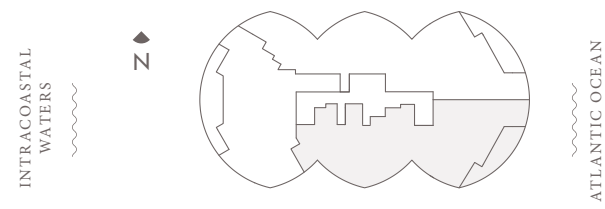
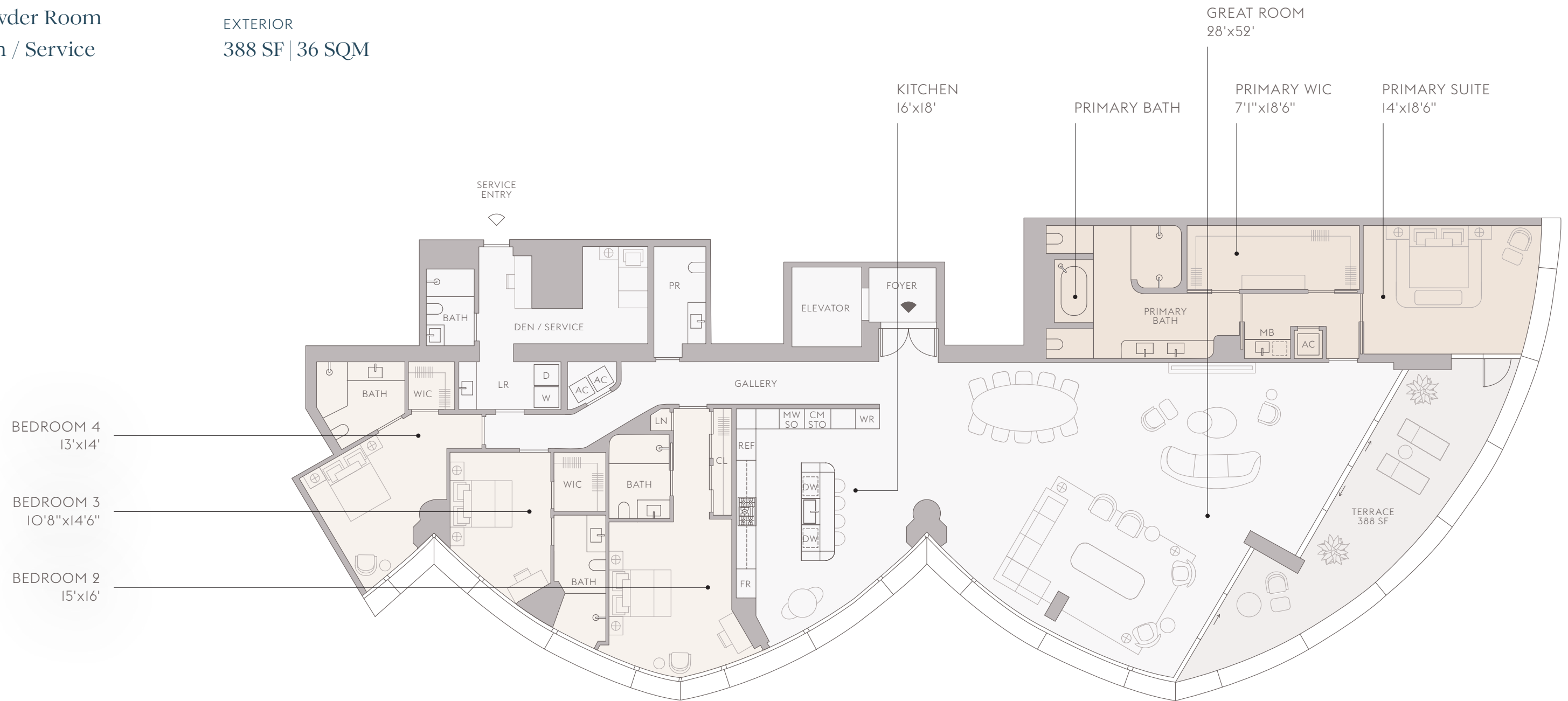
Powder Room

Den / Service

INTERIOR
4,358 SF | 405 SQM

TOTAL
4,746 SF | 441 SQM

EXTERIOR
388 SF | 36 SQM

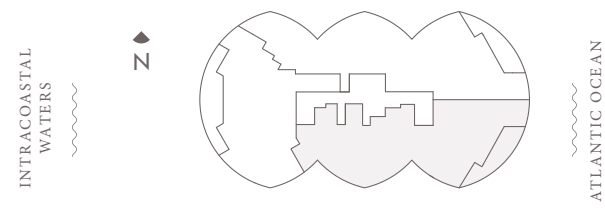
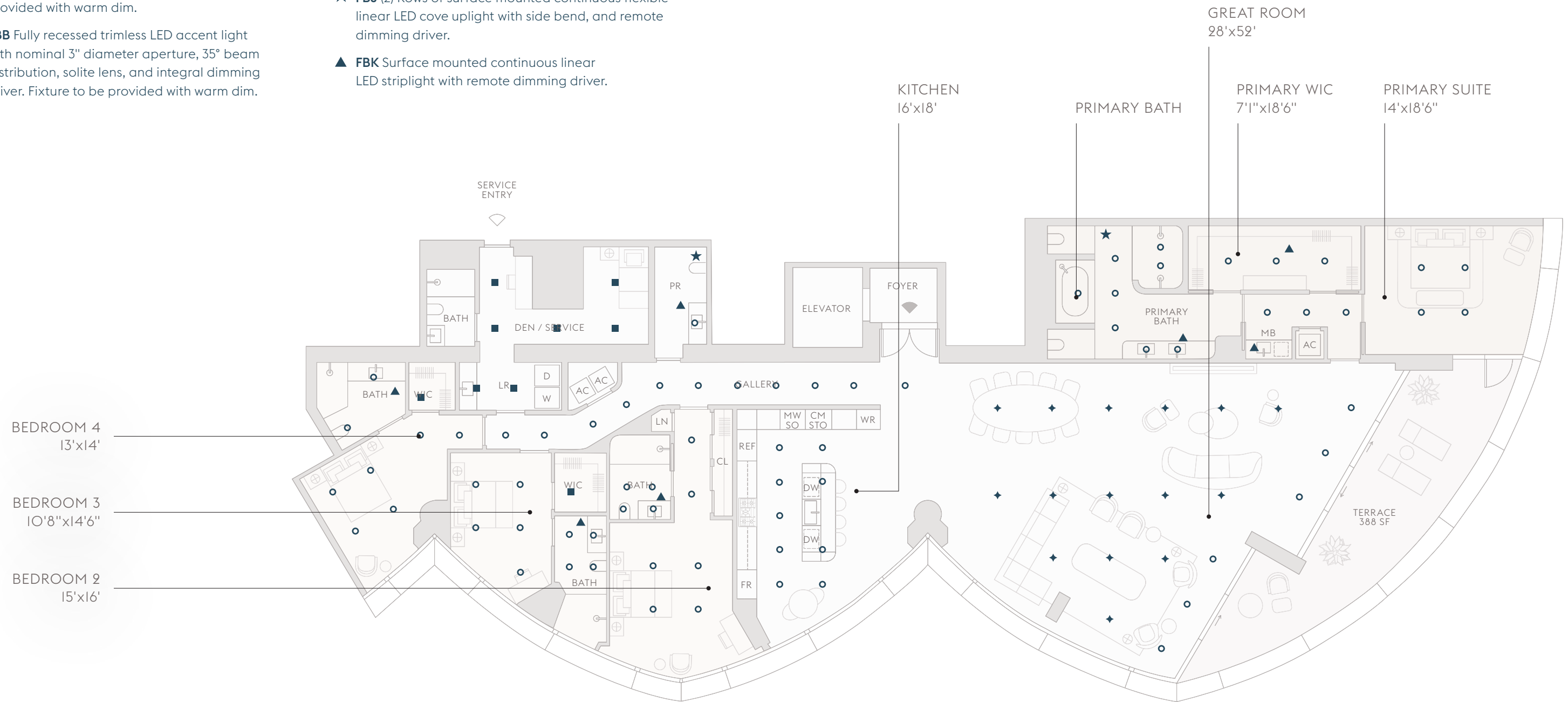


The dimensions stated for this Unit floor plan are approximate because there are various recognized methods for calculating the square footage of a Unit. The square footage stated herein is calculated from the exterior boundaries of the exterior walls to the centerline of interior demising walls without deductions for cutouts, curves, or architectural features. This method typically results in quoted dimensions greater than the dimensions that would be determined by using other accepted methods. The definition of "Unit" and the calculation method to be relied upon is the method of calculation set forth by the Developer in the Developer's Prospectus, which method may result in a square footage calculation that is less than the method used herein. Dimensions and Unit configurations are not guaranteed and may change during construction. Depictions of furnishings, fixtures, and other items of personal property are not included with purchase. Uses of space depicted are not guaranteed. Consult the Developer's Prospectus to learn Unit dimensions, what is offered with the Unit, and all terms and conditions. 2023 © Carlton Terrace Owner LLC, with all rights reserved.

Residence B, Floors 3-17 Ceiling Plan

- **FBA** Fully recessed trimless LED downlight with nominal 3" diameter aperture, 55° beam distribution, solite lens, and integral driver. Fixture to be provided with warm dim.
- ◆ **FBB** Fully recessed trimless LED accent light with nominal 3" diameter aperture, 35° beam distribution, solite lens, and integral dimming driver. Fixture to be provided with warm dim.

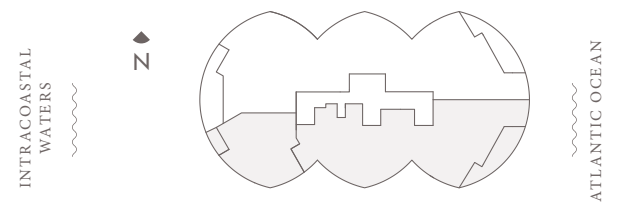
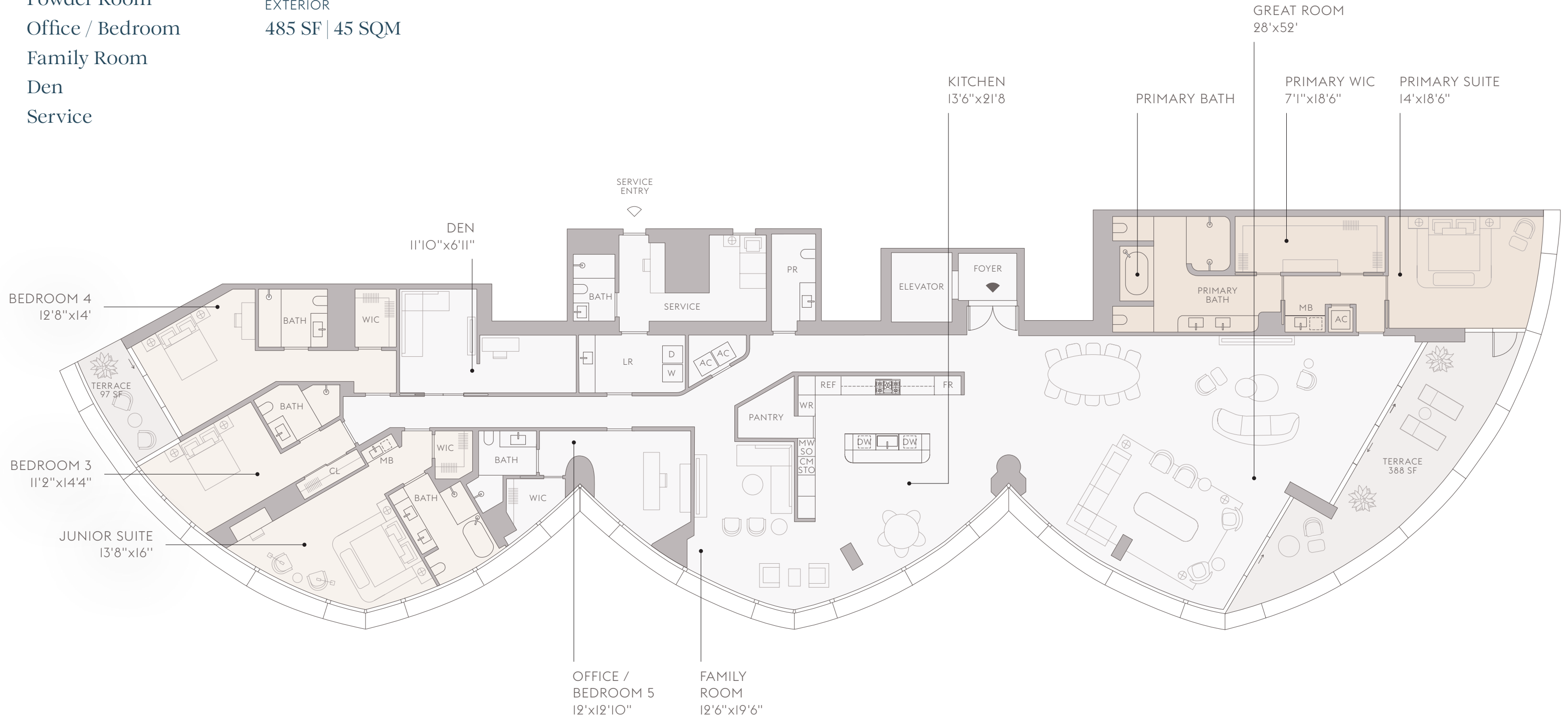
- **FBW** Surface mounted LED downlight with nominal 8" diameter housing.
- ★ **FBJ (2)** Rows of surface mounted continuous flexible linear LED cove uplight with side bend, and remote dimming driver.
- ▲ **FBK** Surface mounted continuous linear LED striplight with remote dimming driver.



The dimensions stated for this Unit floor plan are approximate because there are various recognized methods for calculating the square footage of a Unit. The square footage stated herein is calculated from the exterior boundaries of the exterior walls to the centerline of interior demising walls without deductions for cutouts, curves, or architectural features. This method typically results in quoted dimensions greater than the dimensions that would be determined by using other accepted methods. The definition of "Unit" and the calculation method to be relied upon is the method of calculation set forth by the Developer in the Developer's Prospectus, which method may result in a square footage calculation that is less than the method used herein. Dimensions and Unit configurations are not guaranteed and may change during construction. Depictions of furnishings, fixtures, and other items of personal property are not included with purchase. Uses of space depicted are not guaranteed. Consult the Developer's Prospectus to learn Unit dimensions, what is offered with the Unit, and all terms and conditions. 2023 © Carlton Terrace Owner LLC, with all rights reserved.

Residence B, Floors 18-21

| | | |
|------------------|--------------------|--------------------|
| 4 Bedrooms | INTERIOR | TOTAL |
| 6 Bathrooms | 5,810 SF 540 SQM | 6,295 SF 585 SQM |
| Powder Room | EXTERIOR | |
| Office / Bedroom | 485 SF 45 SQM | |
| Family Room | | |
| Den | | |
| Service | | |

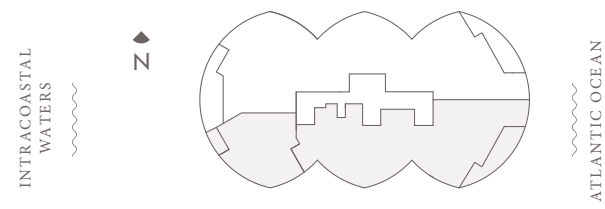
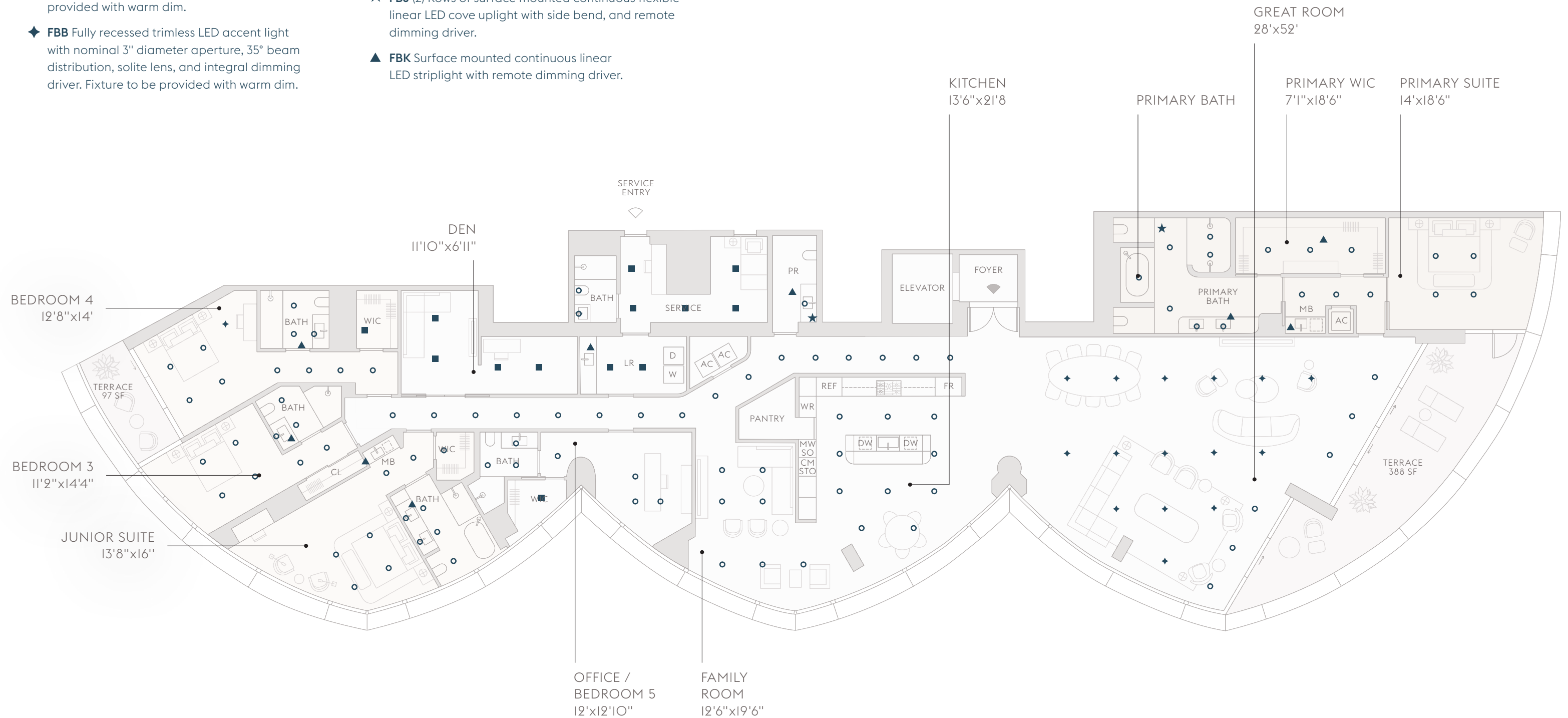


The dimensions stated for this Unit floor plan are approximate because there are various recognized methods for calculating the square footage of a Unit. The square footage stated herein is calculated from the exterior boundaries of the exterior walls to the centerline of interior demising walls without deductions for cutouts, curves, or architectural features. This method typically results in quoted dimensions greater than the dimensions that would be determined by using other accepted methods. The definition of "Unit" and the calculation method to be relied upon is the method of calculation set forth by the Developer in the Developer's Prospectus, which method may result in a square footage calculation that is less than the method used herein. Dimensions and Unit configurations are not guaranteed and may change during construction. Depictions of furnishings, fixtures, and other items of personal property are not included with purchase. Uses of space depicted are not guaranteed. Consult the Developer's Prospectus to learn Unit dimensions, what is offered with the Unit, and all terms and conditions. 2023 © Carlton Terrace Owner LLC, with all rights reserved.

Residence B, Floors 18-21 Ceiling Plan

- **FBA** Fully recessed trimless LED downlight with nominal 3" diameter aperture, 55° beam distribution, solite lens, and integral driver. Fixture to be provided with warm dim.
- ◆ **FBB** Fully recessed trimless LED accent light with nominal 3" diameter aperture, 35° beam distribution, solite lens, and integral dimming driver. Fixture to be provided with warm dim.

- **FBW** Surface mounted LED downlight with nominal 8" diameter housing.
- ★ **FBJ (2)** Rows of surface mounted continuous flexible linear LED cove uplight with side bend, and remote dimming driver.
- ▲ **FBK** Surface mounted continuous linear LED striplight with remote dimming driver.



The dimensions stated for this Unit floor plan are approximate because there are various recognized methods for calculating the square footage of a Unit. The square footage stated herein is calculated from the exterior boundaries of the exterior walls to the centerline of interior demising walls without deductions for cutouts, curves, or architectural features. This method typically results in quoted dimensions greater than the dimensions that would be determined by using other accepted methods. The definition of "Unit" and the calculation method to be relied upon is the method of calculation set forth by the Developer in the Developer's Prospectus, which method may result in a square footage calculation that is less than the method used herein. Dimensions and Unit configurations are not guaranteed and may change during construction. Depictions of furnishings, fixtures, and other items of personal property are not included with purchase. Uses of space depicted are not guaranteed. Consult the Developer's Prospectus to learn Unit dimensions, what is offered with the Unit, and all terms and conditions. 2023 © Carlton Terrace Owner LLC, with all rights reserved.

Residence Flooring Options



24"x48" SNOW WHITE DOLOMITTI



WIDE-PLANK EUROPEAN WHITE OAK

Air Palette—Option for Kitchen



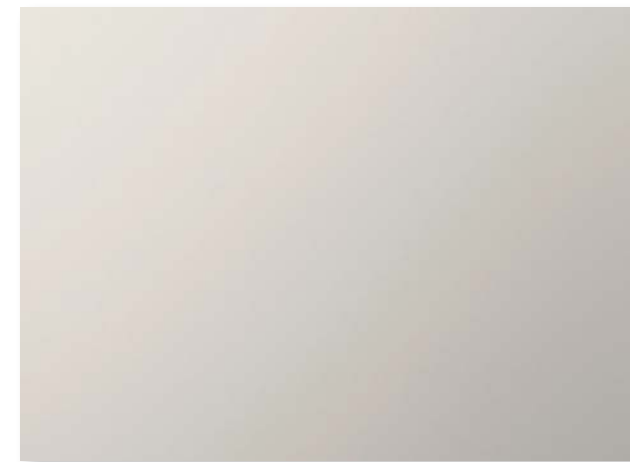
O1.



O2.



O3.



O4.



O1. WHITE OAK CABINERY, O2. BIANCO ECRU MARBLE SLAB COUNTERS & BACKSPLASH, O3. WHITE LACQUERED PANEL ISLAND, O4. PLATINUM METAL FINISH FIXTURES





Earth Palette—Option for Kitchen



O1.



O2.



O3.



O4.



O1. DARK WALNUT CABINETY, O2. WHITE CALACATTA MARBLE SLAB COUNTERS & BACKSPLASH, O4. WHITE LACQUERED PANEL ISLAND, O5. PLATINUM METAL FINISH FIXTURES







Residence C, Floor 2

3 Bedrooms

3 Bathrooms

Powder Room

INTERIOR

3,284 SF | 305 SQM

EXTERIOR

585 SF | 54 SQM

TOTAL

3,869 SF | 359 SQM

BEDROOM 2
11'3"x14'6"

DINING ROOM
12'x18'

LIVING ROOM
21'x22'

KITCHEN
19'6"x11'8"

BEDROOM 3
10'x15'6"

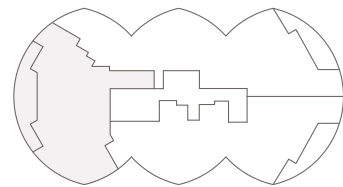
PRIMARY WIC
12'6"x9'4"

OFFICE / DEN
7'8"x15'

PRIMARY SUITE
17'x17'

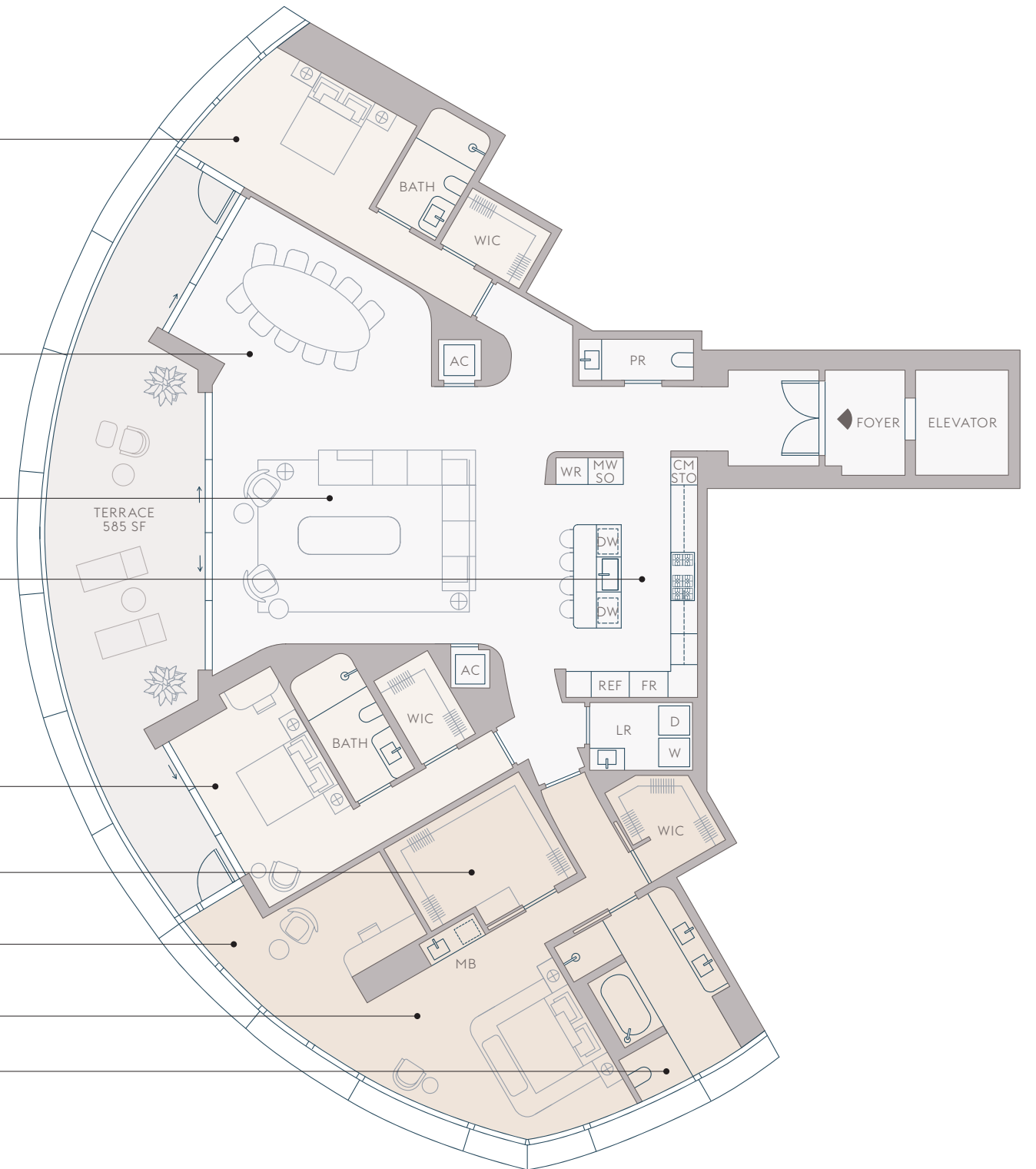
PRIMARY BATH

INTRACOASTAL
WATERS



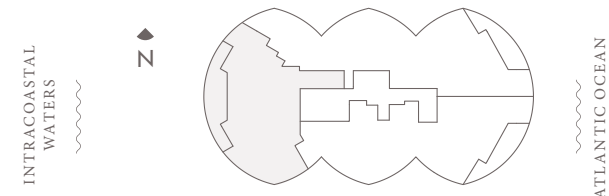
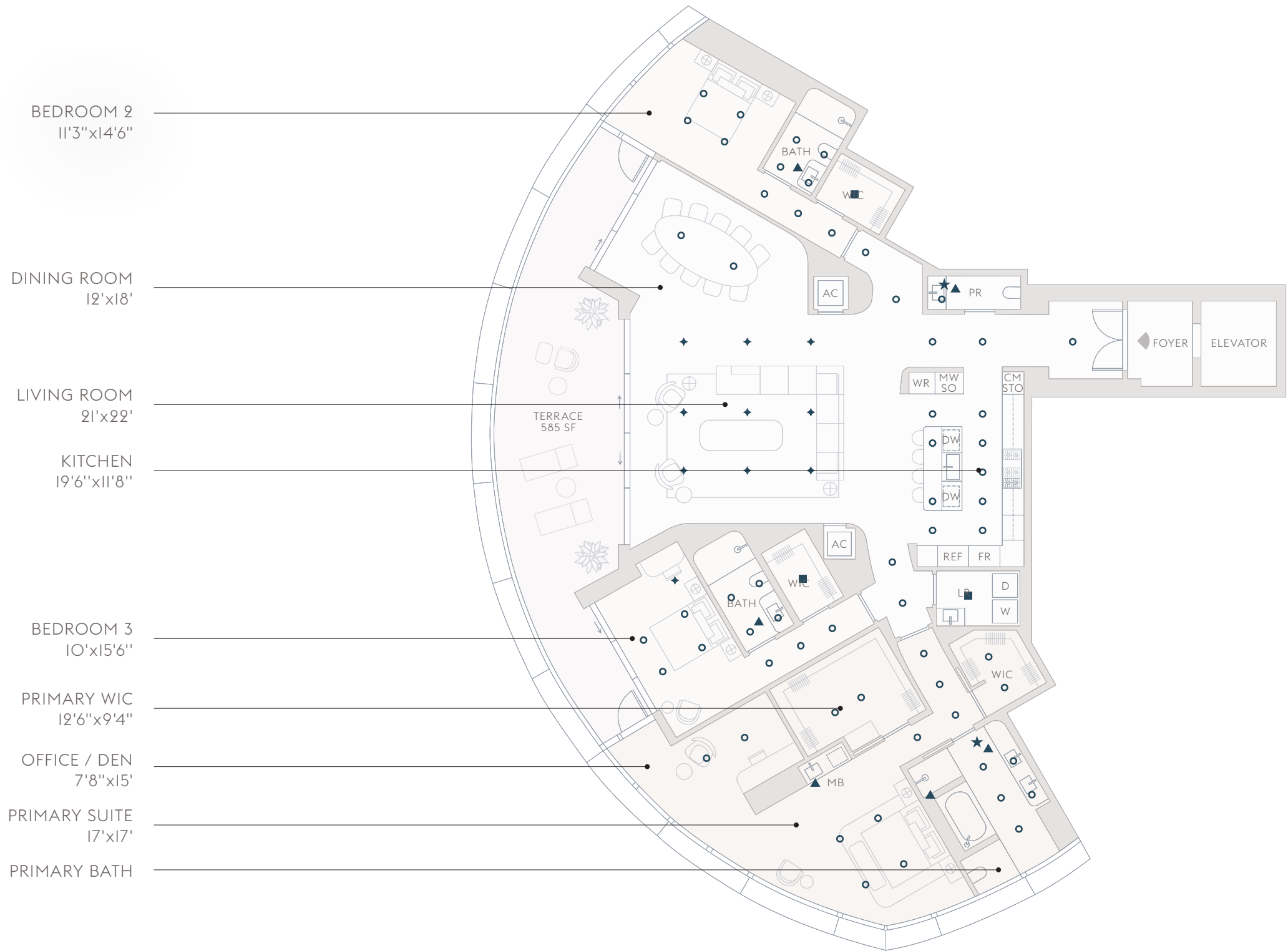
ATLANTIC OCEAN

The dimensions stated for this Unit floor plan are approximate because there are various recognized methods for calculating the square footage of a Unit. The square footage stated herein is calculated from the exterior boundaries of the exterior walls to the centerline of interior demising walls without deductions for cutouts, curves, or architectural features. This method typically results in quoted dimensions greater than the dimensions that would be determined by using other accepted methods. The definition of "Unit" and the calculation method to be relied upon is the method of calculation set forth by the Developer in the Developer's Prospectus, which method may result in a square footage calculation that is less than the method used herein. Dimensions and Unit configurations are not guaranteed and may change during construction. Depictions of furnishings, fixtures, and other items of personal property are not included with purchase. Uses of space depicted are not guaranteed. Consult the Developer's Prospectus to learn Unit dimensions, what is offered with the Unit, and all terms and conditions. 2023 © Carlton Terrace Owner LLC, with all rights reserved.



Residence C, Floor 2 Ceiling Plan

- **FBA** Fully recessed trimless LED downlight with nominal 3" diameter aperture, 55° beam distribution, solite lens, and integral driver. Fixture to be provided with warm dim.
- ◆ **FBB** Fully recessed trimless LED accent light with nominal 3" diameter aperture, 35° beam distribution, solite lens, and integral dimming driver. Fixture to be provided with warm dim.
- **FBW** Surface mounted LED downlight with nominal 8" diameter housing.
- ★ **FBJ** (2) Rows of surface mounted continuous flexible linear LED cove uplight with side bend, and remote dimming driver.
- ▲ **FBK** Surface mounted continuous linear LED striplight with remote dimming driver.



The dimensions stated for this Unit floor plan are approximate because there are various recognized methods for calculating the square footage of a Unit. The square footage stated herein is calculated from the exterior boundaries of the exterior walls to the centerline of interior demising walls without deductions for cutouts, curves, or architectural features. This method typically results in quoted dimensions greater than the dimensions that would be determined by using other accepted methods. The definition of "Unit" and the calculation method to be relied upon is the method of calculation set forth by the Developer in the Developer's Prospectus, which method may result in a square footage calculation that is less than the method used herein. Dimensions and Unit configurations are not guaranteed and may change during construction. Depictions of furnishings, fixtures, and other items of personal property are not included with purchase. Uses of space depicted are not guaranteed. Consult the Developer's Prospectus to learn Unit dimensions, what is offered with the Unit, and all terms and conditions. 2023 © Carlton Terrace Owner LLC, with all rights reserved.

Residence C, Floors 3-17

3 Bedrooms

3 Bathrooms

Powder Room

INTERIOR

3,297 SF | 306 SQM

EXTERIOR

585 SF | 54 SQM

TOTAL

3,882 SF | 361 SQM

BEDROOM 2
11'3"x14'6"

DINING ROOM
12'x18'

LIVING ROOM
21'x22'

KITCHEN
19'6"x11'8"

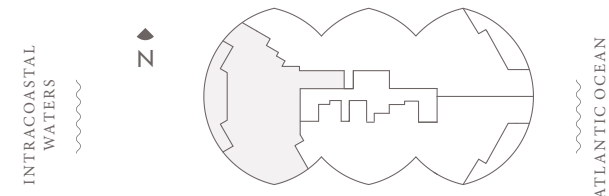
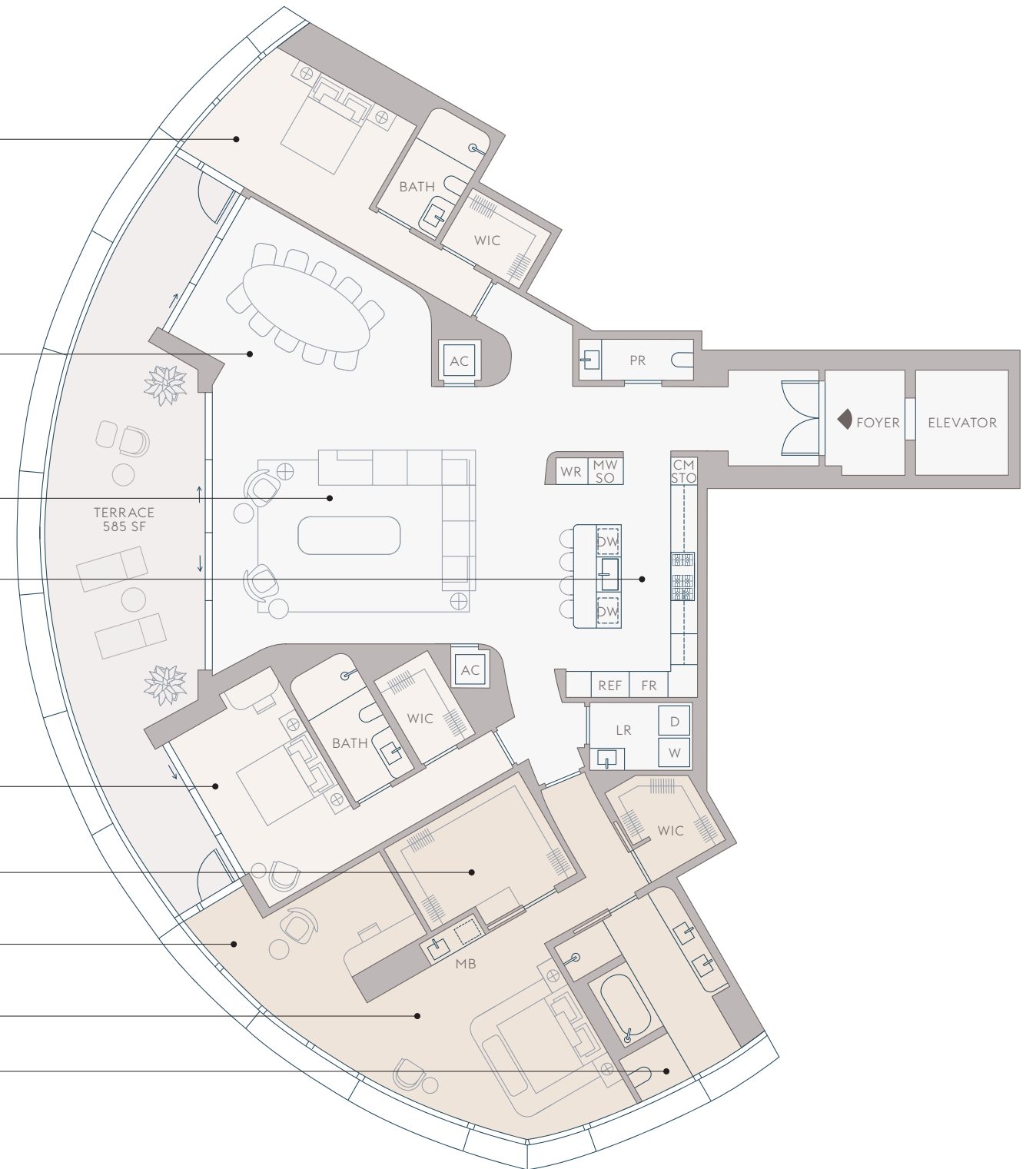
BEDROOM 3
10'x15'6"

PRIMARY WIC
12'6"x9'4"

OFFICE / DEN
7'8"x15'

PRIMARY SUITE
17'x17'

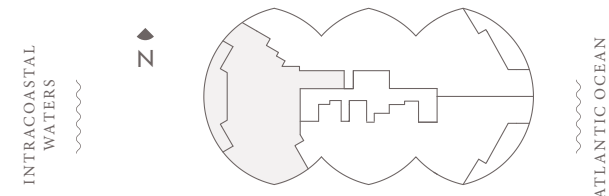
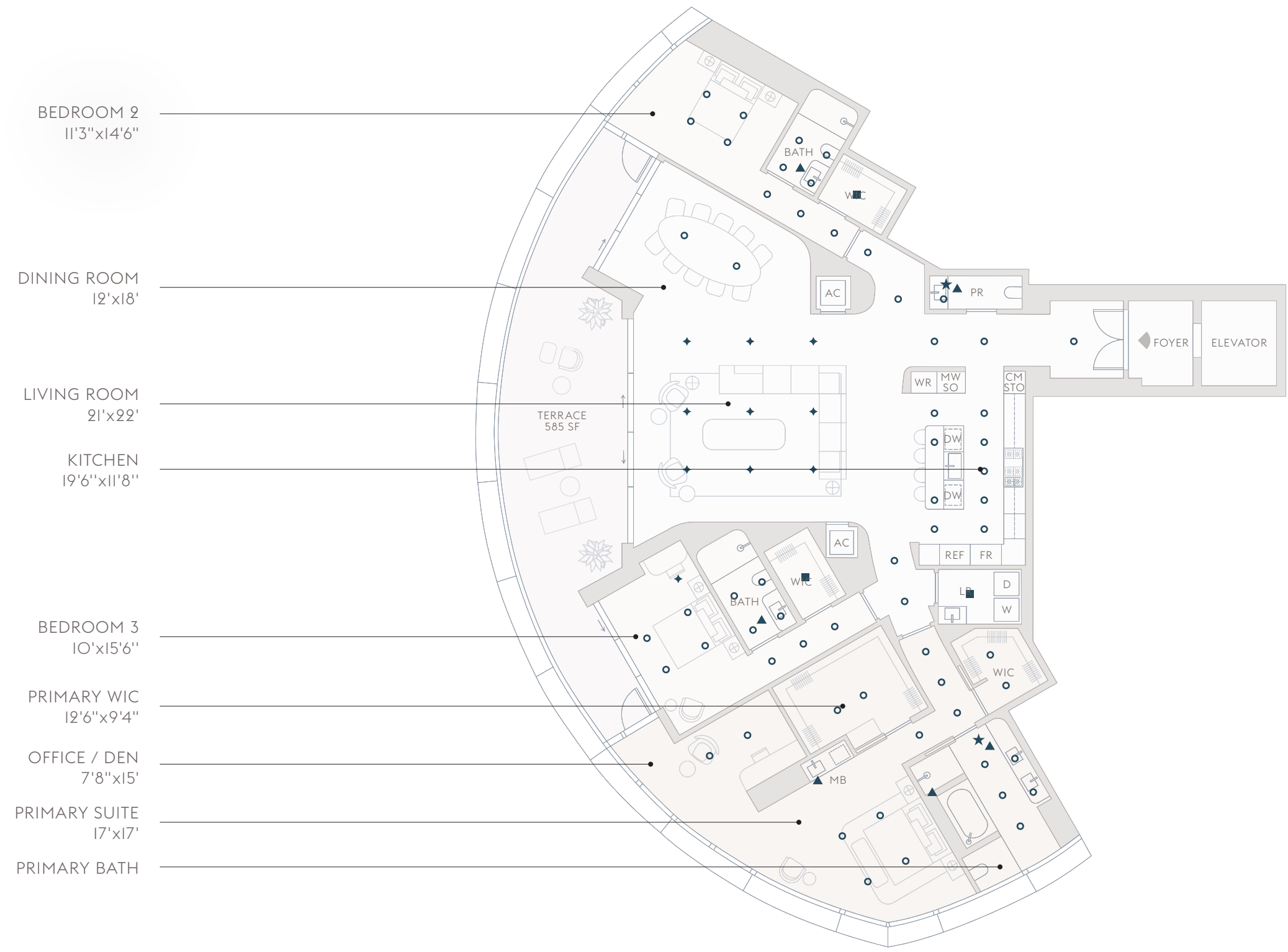
PRIMARY BATH



The dimensions stated for this Unit floor plan are approximate because there are various recognized methods for calculating the square footage of a Unit. The square footage stated herein is calculated from the exterior boundaries of the exterior walls to the centerline of interior demising walls without deductions for cutouts, curves, or architectural features. This method typically results in quoted dimensions greater than the dimensions that would be determined by using other accepted methods. The definition of "Unit" and the calculation method to be relied upon is the method of calculation set forth by the Developer in the Developer's Prospectus, which method may result in a square footage calculation that is less than the method used herein. Dimensions and Unit configurations are not guaranteed and may change during construction. Depictions of furnishings, fixtures, and other items of personal property are not included with purchase. Uses of space depicted are not guaranteed. Consult the Developer's Prospectus to learn Unit dimensions, what is offered with the Unit, and all terms and conditions. 2023 © Carlton Terrace Owner LLC, with all rights reserved.

Residence C, Floors 3-17 Ceiling Plan

- **FBA** Fully recessed trimless LED downlight with nominal 3" diameter aperture, 55° beam distribution, solite lens, and integral driver. Fixture to be provided with warm dim.
- ◆ **FBB** Fully recessed trimless LED accent light with nominal 3" diameter aperture, 35° beam distribution, solite lens, and integral dimming driver. Fixture to be provided with warm dim.
- **FBW** Surface mounted LED downlight with nominal 8" diameter housing.
- ★ **FBJ (2)** Rows of surface mounted continuous flexible linear LED cove uplight with side bend, and remote dimming driver.
- ▲ **FBK** Surface mounted continuous linear LED striplight with remote dimming driver.



The dimensions stated for this Unit floor plan are approximate because there are various recognized methods for calculating the square footage of a Unit. The square footage stated herein is calculated from the exterior boundaries of the exterior walls to the centerline of interior demising walls without deductions for cutouts, curves, or architectural features. This method typically results in quoted dimensions greater than the dimensions that would be determined by using other accepted methods. The definition of "Unit" and the calculation method to be relied upon is the method of calculation set forth by the Developer in the Developer's Prospectus, which method may result in a square footage calculation that is less than the method used herein. Dimensions and Unit configurations are not guaranteed and may change during construction. Depictions of furnishings, fixtures, and other items of personal property are not included with purchase. Uses of space depicted are not guaranteed. Consult the Developer's Prospectus to learn Unit dimensions, what is offered with the Unit, and all terms and conditions. 2023 © Carlton Terrace Owner LLC, with all rights reserved.

Residence Flooring Options



24"x48" SNOW WHITE DOLOMITTI



WIDE-PLANK EUROPEAN WHITE OAK

Air Palette—Option for Kitchen



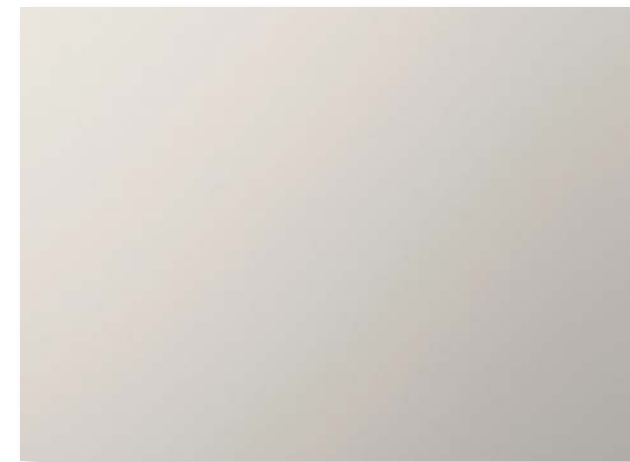
O1.



O2.



O3.



O4.



O1. WHITE OAK CABINETY, O2. BIANCO ECRU MARBLE SLAB COUNTERS & BACKSPLASH, O3. WHITE LACQUERED PANEL ISLAND,
O4. PLATINUM METAL FINISH FIXTURES





Earth Palette—Option for Kitchen



O1.



O2.



O3.



O4.



O1. DARK WALNUT CABINETY, O2. WHITE CALACATTA MARBLE SLAB COUNTERS & BACKSPLASH, O4. WHITE LACQUERED PANEL ISLAND, O5. PLATINUM METAL FINISH FIXTURES





Air Palette—Option for Primary Bathroom



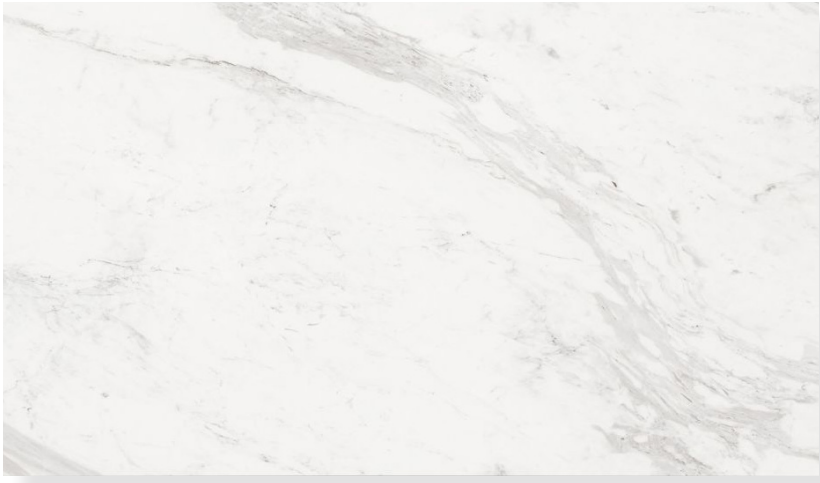
O1.



O2.



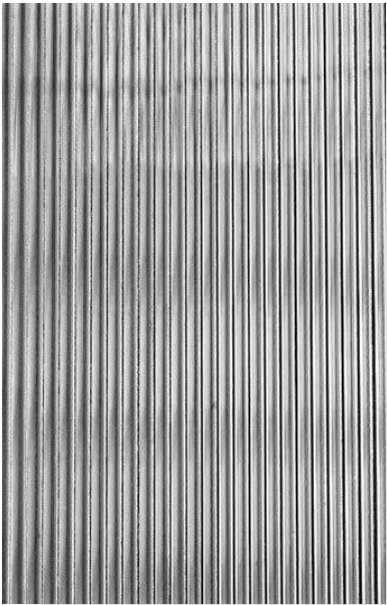
O3.



O4.



O5.



O6.



O7.

O1. 24"x48" TRAVERTINE FLOOR TILE, O2. WHITE LACQUERED PANEL VANITY, O3. TRAVERTINE SLAB WALLS, O4. WHITE VOLAKAS MARBLE SLAB COUNTERS & BACKSPLASH, O5. BRUSHED CHAMPAGNE METAL FINISH FIXTURES, O6. FLUTED GLASS SHOWER, O7. APPARATUS WALL SCONCE

Primary Bathroom

SHOWN IN AIR PALETTE



Primary Bathroom



Earth Palette—Option for Primary Bathroom



O1.



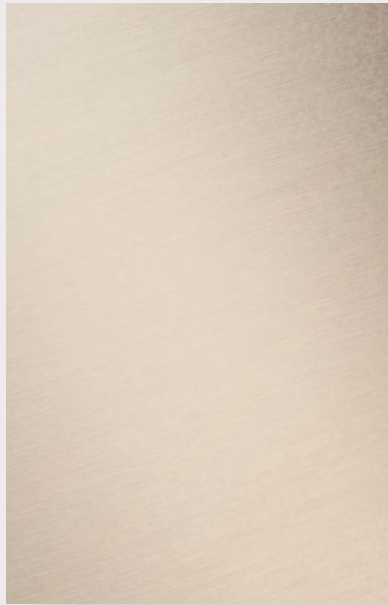
O2.



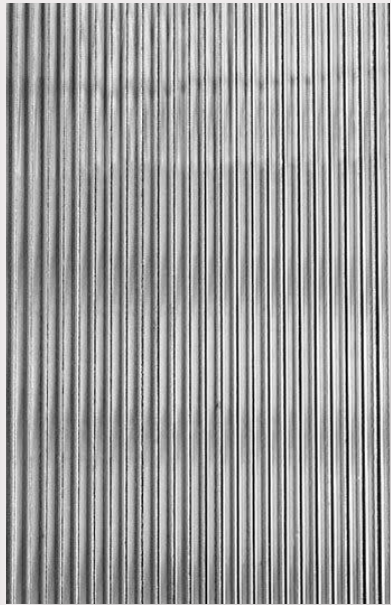
O3.



O4.



O5.



O6.



O7.

O1. 24"x48" TRAVERTINE FLOOR TILE, O2. DARK WALNUT VANITY, O3. TRAVERTINE SLAB WALLS, O4. WHITE VOLAKAS MARBLE SLAB COUNTERS & BACKSPLASH, O5. BRUSHED CHAMPAGNE METAL FINISH FIXTURES, O6. FLUTED GLASS SHOWER, O7. APPARATUS WALL SCONCE

Primary Bathroom

SHOWN IN EARTH PALETTE



Secondary Bathroom



01.



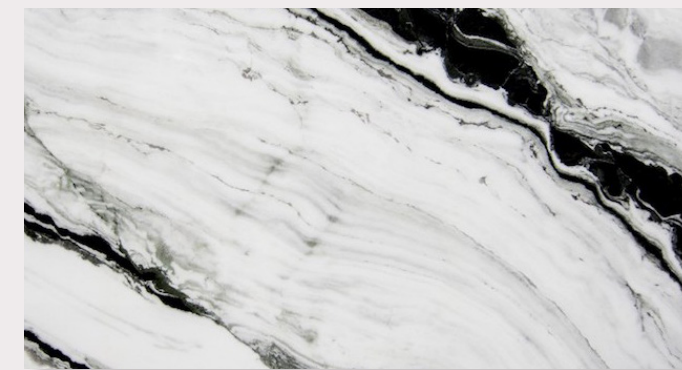
02.



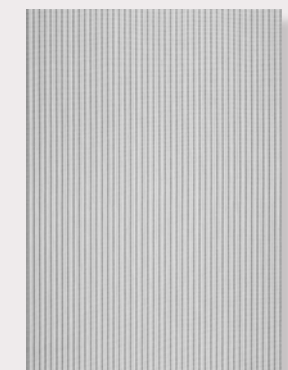
04.



05.



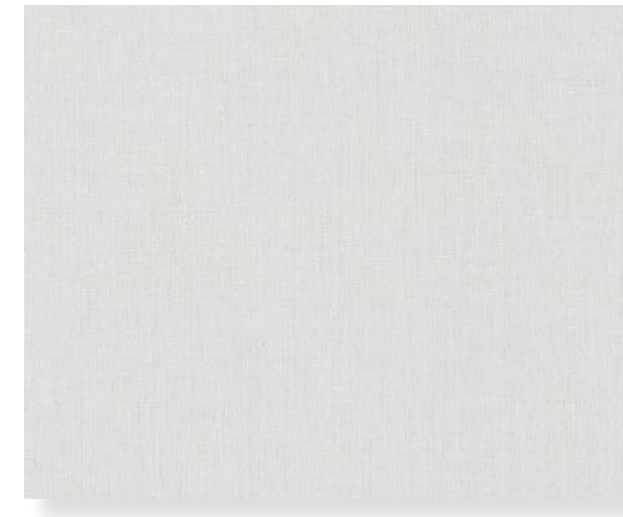
03.



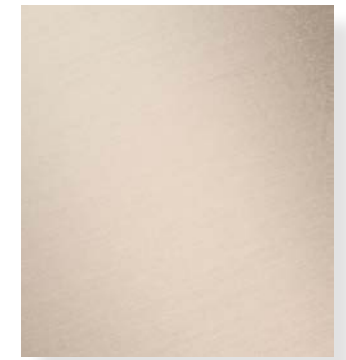
06.

MATERIALS & FINISHES

01. 12"x24" BIANCO DOLOMITTI TILE FLOORING & WALLS, 02. WHITE OAK CABINETRY, 03. PANDA WHITE MARBLE SLAB VANITY, 04. BRUSHED CHAMPAGNE METAL FINISH FIXTURES, 05. HOLY HUNT WALL SCONCE, 06. FLUTED GLASS



O1.



O4.



O2.



O5.



O3.

Powder Room

O1. GRAY GRASS-CLOTH WALL COVERING, O2. SUPER WHITE MARBLE SLAB VANITY, O3. WIDE-PLANK EUROPEAN WHITE OAK FLOORS, O4. BRUSHED CHAMPAGNE METAL FINISH FIXTURES, O5. APPARATUS WALL SCONCE

Wardrobe & Midnight Bar

As designed by Rottet Studio, these incidental spaces are carefully considered and beautifully outfitted with custom millwork, exquisite stone and lustrous fixtures.



Wardrobe



O1.



O2.



O3.



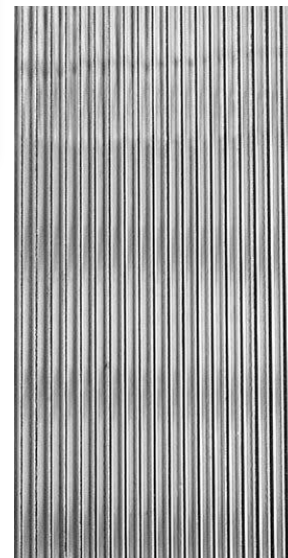
O6.



O4.



O5.



O7.

AIR PALETTE

O1. WIDE-PLANK EUROPEAN WHITE OAK FLOORS, O2. WHITE OAK CABINETY, O3. ARABESCATO CORCHIA COUNTERTOPS, O4. BRUSHED CHAMPAGNE METAL FINISH FIXTURES, O5. JOSEPH GILES HOLMES PULLS, O6. LEATHER-LINED DRAWERS O7. FLUTED GLASS

BASE PACKAGE: ALL WOOD FINISHES, NO DOORS, MARBLE COUNTERTOP ONLY

UPGRADED PACKAGE: LEATHER WRAPPED DRAWERS, DOORS AND BACK PANEL, FLUTED GLASS DOORS, MARBLE COUNTERTOP AND ACCENT WALL



O1.



O2.



O3.



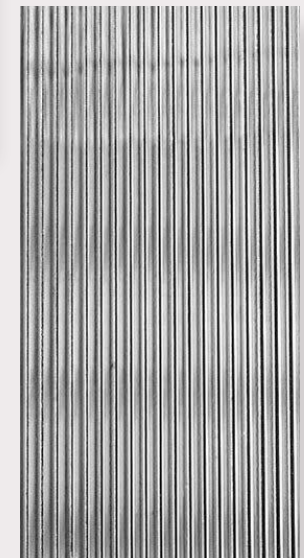
O6.



O4.



O5.



O7.

EARTH PALETTE

O1. WIDE-PLANK EUROPEAN WHITE OAK FLOORS, O2. WALNUT CABINETY, O3. ARABESCATO CORCHIA COUNTERTOPS, O4. BRUSHED CHAMPAGNE METAL FINISH FIXTURES, O5. JOSEPH GILES HOLMES PULLS, O6. LEATHER-LINED DRAWERS O7. FLUTED GLASS

BASE PACKAGE: ALL WOOD FINISHES, NO DOORS, MARBLE COUNTERTOP ONLY

UPGRADED PACKAGE: LEATHER WRAPPED DRAWERS, DOORS AND BACK PANEL, FLUTED GLASS DOORS, MARBLE COUNTERTOP AND ACCENT WALL

Wardrobe

UPGRADED PACKAGE SHOWN IN AIR PALETTE



Wardrobe

UPGRADED PACKAGE SHOWN IN AIR PALETTE



Wardrobe

UPGRADED PACKAGE SHOWN IN EARTH PALETTE



Wardrobe

UPGRADED PACKAGE SHOWN IN EARTH PALETTE



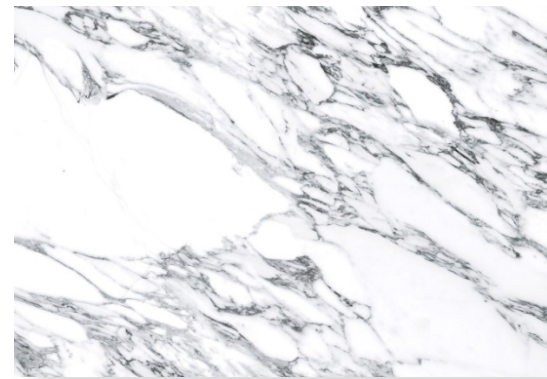
Midnight Bar



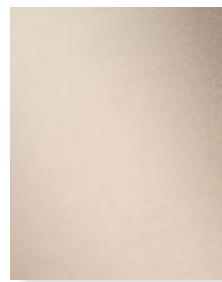
01.



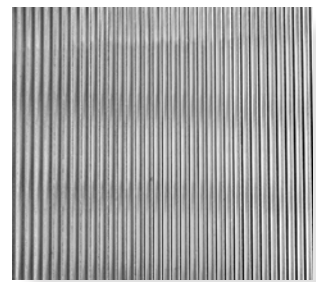
02.



03.



04.



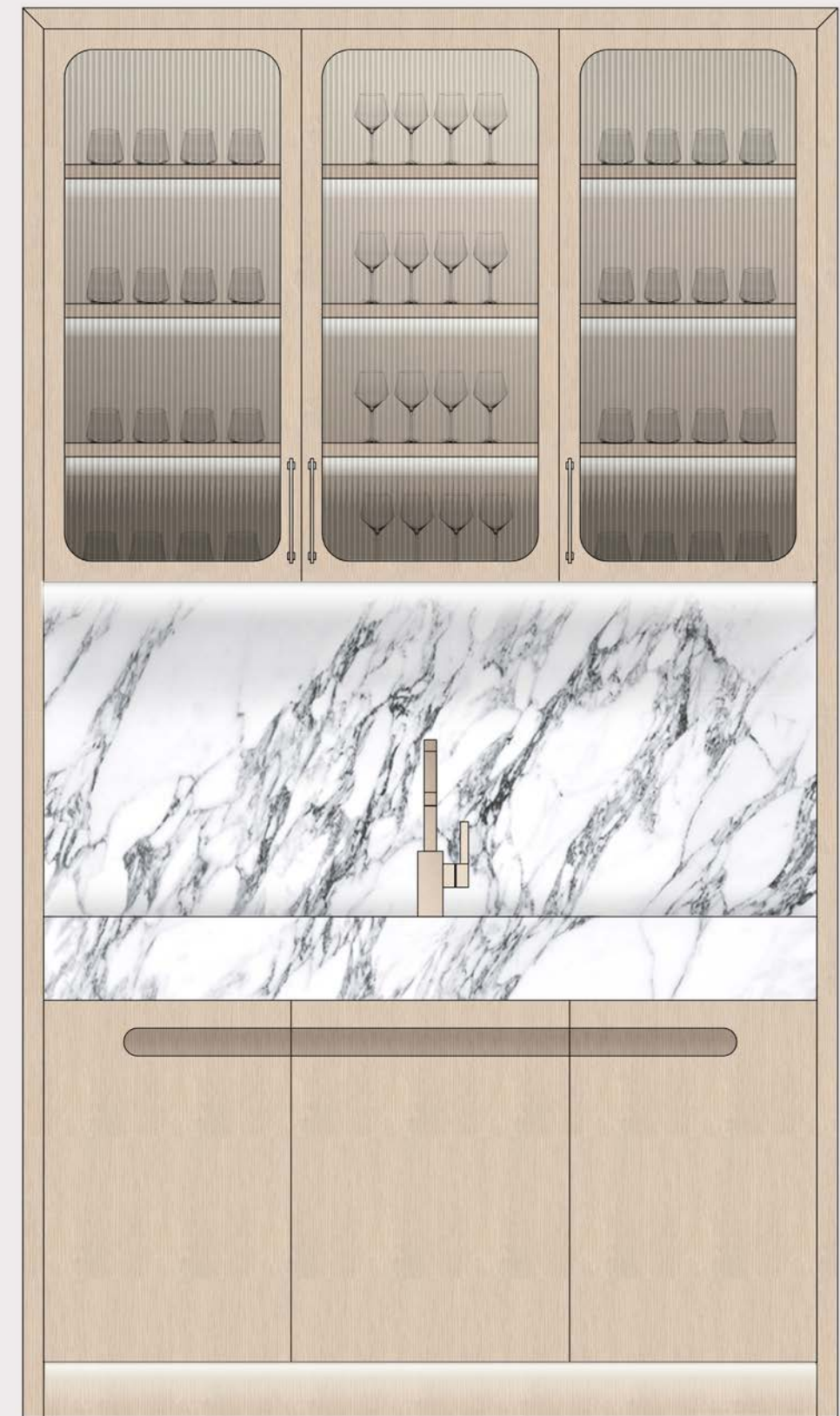
05.

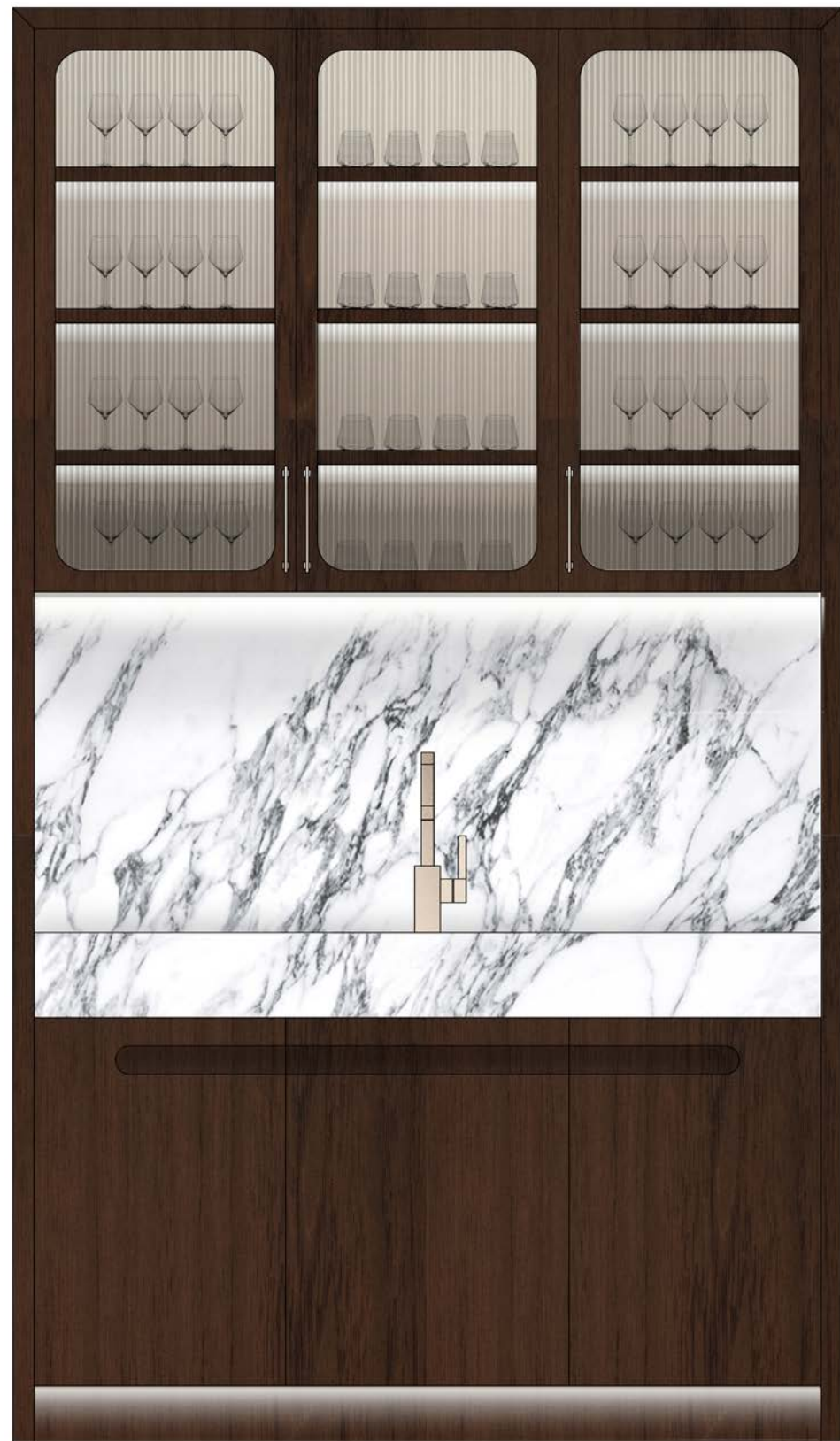


06.

AIR PALETTE

01. WIDE-PLANK EUROPEAN WHITE OAK FLOORS, 02. WHITE OAK CABINETS, 03. ARABESCATO CORCHIA COUNTERTOPS, 04. BRUSHED CHAMPAGNE METAL FINISH FIXTURES, 05. FLUTED GLASS, 06. JOSEPH GILES HOLMES PULLS





01.



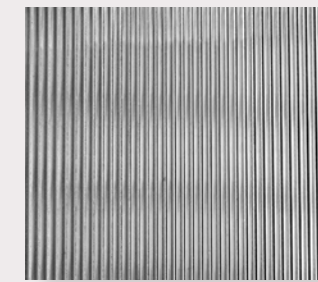
02.



03.



04.



05.



06.

EARTH PALETTE

01. WIDE-PLANK EUROPEAN WHITE OAK FLOORS, 02. WALNUT CABINTRY, 03. ARABESCATO CORCHIA COUNTERTOPS, 04. BRUSHED CHAMPAGNE METAL FINISH FIXTURES, 05. FLUTED GLASS, 06. JOSEPH GILES HOLMES PULLS

KITCHEN

EQUIPMENT & FITTINGS



SUBZERO-WOLF
30" M SERIES CONTEMPORARY
SPEED OVEN



SUB-ZERO / COVE
24" DISHWASHER WITH
WATER SOFTENER—PANEL READY



DORNBRACHT
SINGLE PULL LEVER FAUCET
WITH PULL DOWN SPRAY



SUB-ZERO / WOLF
30" M SERIES CONTEMPORARY
DROP-DOWN DOOR MICROWAVE OVEN



48" SUB-ZERO / WOLF
DUAL FUEL RANGE
(TYPE C)



STAINLESS STEEL KITCHEN SINK
IN SATIN FINISH



SUB-ZERO / WOLF
30" M SERIES CONTEMPORARY
COFFEE SYSTEM



38" SUB-ZERO / WOLF
DUAL FUEL RANGE
(TYPES A AND B)



SUB-ZERO / WOLF
36" DESIGNER COLUMN
REFRIGERATOR—PANEL READY



SUB-ZERO / WOLF
36" DESIGNER COLUMN
FREEZER WITH ICE MAKER—
PANEL READY



SUB-ZERO / WOLF
30" DESIGNER WINE STORAGE—
PANEL READY



FINISH: DORNBRACHT
PLATINUM METAL



SUB-ZERO / WOLF
30" M SERIES CONTEMPORARY
GLASS CONVECTION STEAM OVEN WITH
RETRACTABLE HANDLE

STONE INDEX



BIANCO ECRU
KITCHEN



CALACATTA WHITE
KITCHEN



WHITE VOLAKAS
PRIMARY BATHROOM



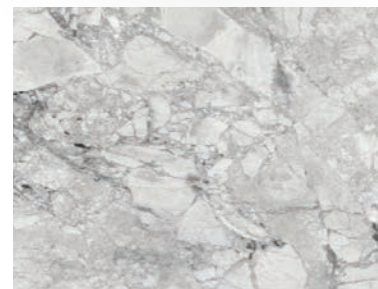
BIANCO SANTA CATERINA
TRAVERTINE HONED & FILLED
PRIMARY BATHROOM



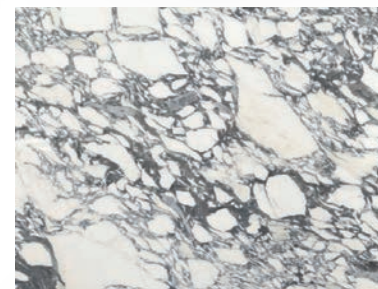
PANDA MARBLE HONED
SECONDARY BATHROOM



SNOW WHITE DOLOMITTI HONED
SECONDARY BATHROOM



SUPER WHITE HONED
POWDER ROOM



ARABESCATO CORCHIA HONED
WARDROBES & MIDNIGHT BAR

PRIMARY BATHROOM

FIXTURE & HARDWARE SELECTIONS



STEAM SHOWER WITH
WALL JETS



DORNBRACHT MEM
HAND SHOWER SET



TOTO WASHLET
SMART TOILET



DORNBRACHT MEM
TOILET ROLL HOLDER



DORNBRACHT WALL-MOUNTED
LAVATORY MIXER



DORNBRACHT MEM
TOWEL BAR



DORNBRACHT MEM
TUB FILLER



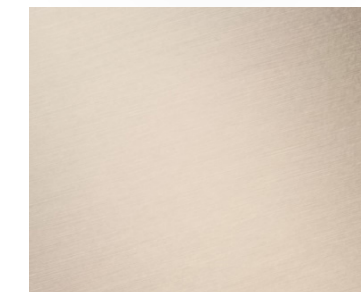
DORNBRACHT MEM
THERMOSTAT MODULE



DORNBRACHT
RAIN PANEL



DORNBRACHT MEM
ROBE HOOK



FINISH: BRUSHED CHAMPAGNE

SECONDARY BATHROOM

FIXTURE & HARDWARE SELECTIONS



DORNBRACHT TARA
RAIN SHOWER



DORNBRACHT TARA
TOWEL BAR



TOTO FLOOR
MOUNTED TOILET



DORNBRACHT
HAND SHOWER SET



DORNBRACHT TARA
WALL-MOUNTED LAVATORY
MIXER



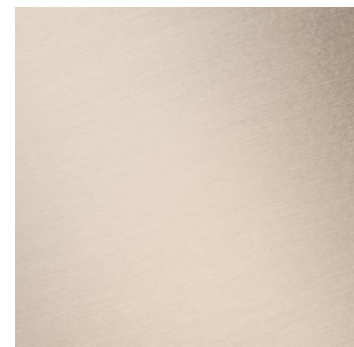
DORNBRACHT TARA
ROLL HOLDER



DORNBRACHT
THERMOSTAT MODULE



DORNBRACHT TARA
ROBE HOOK



FINISH: BRUSHED CHAMPAGNE

POWDER ROOM

FIXTURE & HARDWARE SELECTIONS



TOTO FLOOR
MOUNTED TOILET



DORNBRACHT DECK-MOUNTED
LAVATORY MIXER



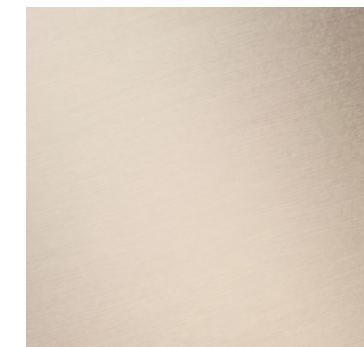
DORNBRACHT MEM
TOILET ROLL HOLDER



DORNBRACHT MEM
ROBE HOOKS



DORNBRACHT MEM
TOWEL BAR



FINISH: BRUSHED CHAMPAGNE

DETAILS ON FIXTURES & FURNISHINGS

Graciously proportioned residence layout by Rottet Studios

Italian flush panel interior doors with concealed hinges

Private elevator foyer with double door unit entrance

Unit pre-wired for motorized drapes and smart lighting fixtures (upgrades intended to be offered to purchasers)

Ceiling heights of 10' except in areas with dropped ceilings, soffits, recessed lights and/or other equipment

Rottet Studio custom-designed bathrooms with white lacquered panel vanity, travertine slab walls and travertine floor tile, marble slab counters and backsplash, brushed champagne metal finish, fluted glass shower and water closets, Dornbracht plumbing fixtures in all bathrooms, and Toto toilets throughout (integrated smart toilets in primary bathrooms)

Rottet Studio custom-designed kitchen cabinets with marble slab counters and backsplash with Dornbracht kitchen in glazed steel and Sub-Zero / Wolf M Series appliance package

Glazing system designed by SOM, featuring Schüco lift-and-slide glazing system with 10' opening

Smart multi-zone climate-controlled system, with slotted linear diffusers throughout the residences

Floor-to-ceiling double-laminated and insulated low-iron glass creates higher energy efficiency and noise reduction windows throughout the residences; glass panels span a width of 5' and height of 10'

Rottet Studio custom-designed base closet system (upgrades intended to be offered to purchasers)

Stone flooring installed throughout primary living areas, with a purchaser option to change to wood flooring

Rottet Studio custom-designed dropped ceiling and lighting plan throughout the residences, with custom-designed shade pockets (upgrades intended to be offered to purchasers)

Expansive terraces up to 11' deep with finished flooring

Service room with en suite 3-piece bathroom

Smooth beveled panels for slab-edge coverings

Laundry room with full-sized washer and dryer

Frameless glass balcony railings

The foregoing items are subject to the provisions of Sections 14 and 15 of the Agreement. Additionally, Buyer understands and agrees that at this time, all features, building specs and finishes are proposed only and that in new construction multistory developments, appliances, materials and finishes are not purchased until shortly before completion of the Building. As such, while the described features are representative of the types of items currently contemplated, actual items will only be determined as construction of the project progresses. As such, Buyer authorizes Seller, in its sole discretion: (i) to make changes of suppliers, manufacturers, brand names, or items; and/or (ii) to modify the design concept and/or the list of standard features or make substitutions for equipment, material, appliances, brands, colors, models, etc., with items which in Seller's opinion are of equal or better quality (regardless of cost). THE INFORMATION PROVIDED, INCLUDING SPECIFICATIONS, MODELS AND BRANDS, IS BASED UPON PRELIMINARY DEVELOPMENT PLANS AND IS SOLELY FOR INFORMATIONAL PURPOSES, AND IS SUBJECT TO CHANGE WITHOUT NOTICE. Reference to any upgrades offered may require payment of an additional cost. All measurements are approximate.

RivageBalHarbour.com
786.885.3839

Future residences located at:
10245 Collins Avenue
Bal Harbour, FL 33154



Rivage Bal Harbour Condominium (the "Condominium") is developed by Carlton Terrace Owner LLC, a Delaware limited liability company ("Developer"). Any and all statements, disclosures and/or representations shall be deemed made by Developer and not by Related Group and/or any of its affiliates, and any purchaser agrees to look solely to Developer (and not to Related Group and/or any of its affiliates) with respect to any and all matters relating to the marketing and/or development of the Condominium and with respect to the sales of units in the Condominium.

Developer has the right to select, retain, remove and/or change any particular design or construction professional (e.g., architect, contractor, interior designer) being involved in the development or design of the Condominium listed herein at any time without notice. All dimensions and ceiling heights are approximate and may vary with actual construction, and all floor plans and development plans are subject to change. Additionally, ceiling heights are measured from top of slab to top of slab and exclude areas where any soffits, moldings, drop and/or suspended ceilings and/or light fixtures may be installed. As such, the referenced ceiling height may not represent actual ceiling clearance.

The illustrations and images are conceptual and may vary from concept to actual construction. The images are examples and do not reflect the design or décor of the completed Condominium. The floor plan, unit layout, locations of windows, doors, closets, plumbing fixtures, mechanical equipment, appliances, structural elements, architectural design elements, views, and the uses, configurations, and entries to rooms may change based on final approved plans, permitting, and completed construction. The furniture plan and the uses of space illustrated are suggested uses only and not intended to guaranty or represent any specific use of space. All residence features and building amenities are subject to change, including, without limitation, changes in manufacturers, brands, amenities, services and/or the design team. Certain finishes, furnishings and services, may not be included with the purchase of a unit, and if provided, may be upgrades or extras and require additional payments. Consult the Offering Documents and the Agreement for a description of those features/items which are to be included in the units. The Condominium views will vary depending on the Unit purchased. No view, water or otherwise, is guaranteed. Consult only the Developer's Prospectus for the Condominium to learn terms, conditions, specifications, estimated costs, Unit views, and to learn what is included with a Unit purchase and how to calculate the Unit size. The balconies depicted are conceptual and the size will vary based on final permitting and completed construction. Pursuant to a license agreement, Developer has the right to use the trade names, marks, images, and logos of Related Group for so long as the license agreement is not terminated or otherwise lapses. Developer is not incorporated in, located in, nor a resident of, New York and this is not intended to be an offer to sell, or solicitation of an offer to buy, condominium units in New York, or to residents of New York, or residents of any other jurisdiction where prohibited by law. Reproduction for any use is not authorized.

The project graphics, renderings and text provided herein are copyrighted works owned by the developer. All rights reserved. Unauthorized reproduction, display or other dissemination of such materials is strictly prohibited and constitutes copyright infringement. Artist's renderings of development exclude images of surrounding and neighborhood buildings.

This is not intended to be an offer to sell, or solicitation to buy, condominium units to residents of any jurisdiction where prohibited by law, and your eligibility for purchase will depend upon your state of residency. This offering is made only by the prospectus for the condominium, and no statement should be relied upon if not made in the prospectus. No real estate broker is authorized to make any representations or other statements regarding the projects, and no agreements with, deposits paid to or other arrangements made with any real estate broker are or shall be binding on the developer.

